

**Conditions**

**Column:** ACE UltraCore 2.5 SuperC18  
**Dimensions:** 100 x 2.1 mm  
**Part Number:** CORE-25A-1002U  
**Mobile Phase:** A: 5 mM ammonium formate in H<sub>2</sub>O/MeOH (9:1 v/v)  
 B: 5 mM ammonium formate in H<sub>2</sub>O/MeOH (1:9 v/v)  
**Gradient:**

Time (mins)	%B
0.0	30
0.5	30
15.0	100
22.0	100
22.1	30
27.0	30

**Flow Rate:** 0.3 mL/min  
**Injection:** 6 µL  
**Temperature:** 24 °C  
**Detection:** AB SCIEX 4000 QTRAP  
 TurbolonSpray ESI positive mode  
 Capillary voltage: 5000 V  
 Heater gas temperature: 450 °C  
**Sample:** Sample prepared using QuEChERS methodology  
 Method validated using cucumber matrix spiked at  
 0.01 mg/kg, 265 analytes successfully validated  
 (Analytes in black)



Available from



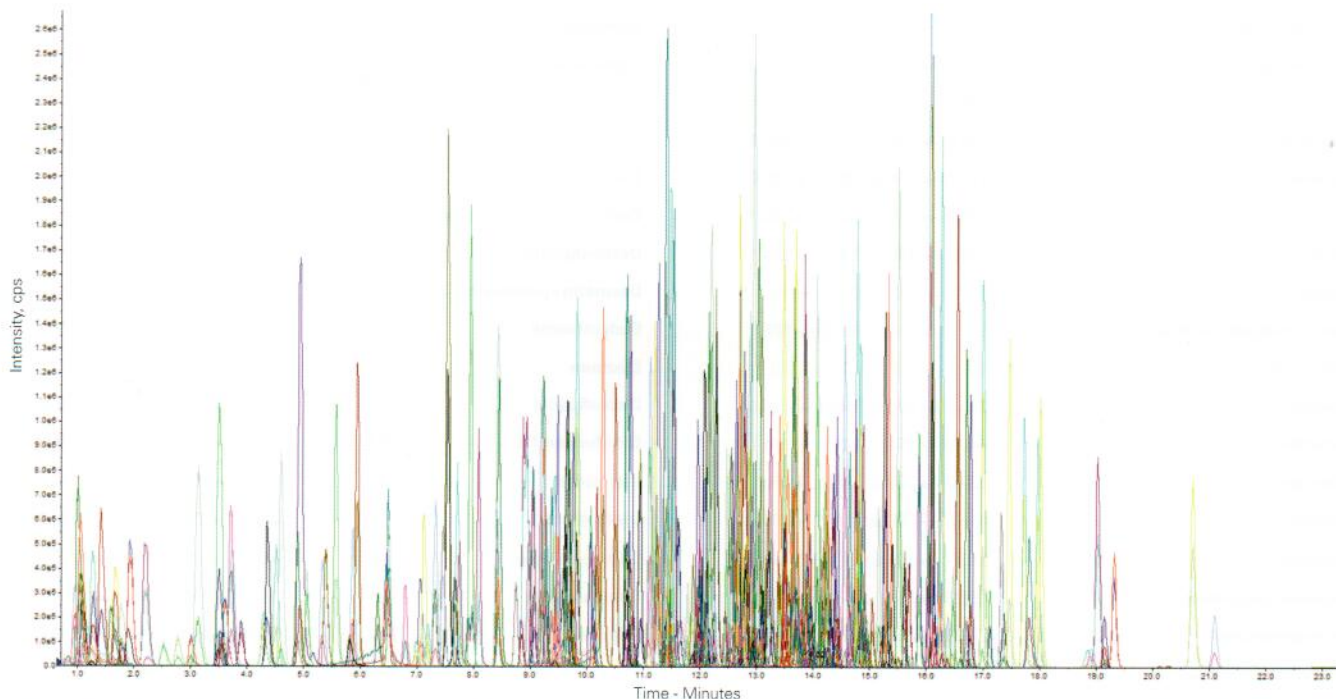
**LCC Engineering & Trading GmbH**

Steinbruchstrasse 4, CH-4622 Egerkingen, Switzerland

Tel.: +41 62 398 5271, Fax.: +41 62 398 5274

[info@chemsupply.ch](mailto:info@chemsupply.ch)

[www.chromatographyshop.com](http://www.chromatographyshop.com)



Reproduced with permission of National Food Chain Safety Office, Directorate of Plant Protection, Soil Conservation and Agri-Environment, Hungary