

Conditions

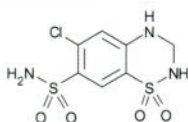
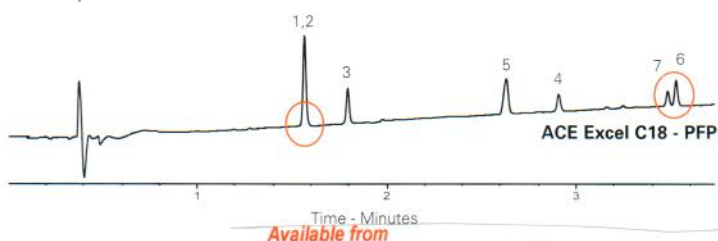
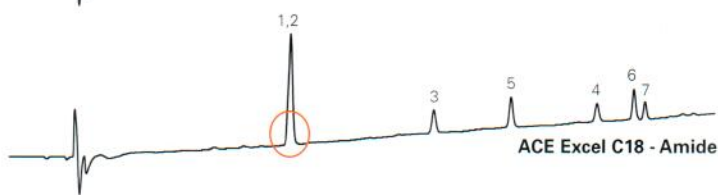
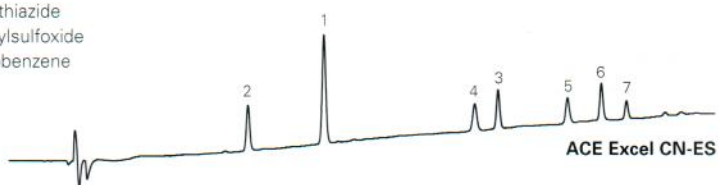
Column: ACE Excel 3 CN-ES
 ACE Excel 3 C18-Amide
 ACE Excel 3 C18-PFP
Dimensions: 100 x 3.0 mm
Part Numbers: EXL-1113-1003U, EXL-1112-1003U, EXL-1110-1003U
Mobile Phase: A: 20 mM ammonium formate in H₂O
 B: 20 mM ammonium formate in MeOH
Gradient:

Time (mins)	%B
0.0	3
5.0	100
6.0	100
6.5	3

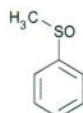
Flow Rate: 0.6 mL/min
Temperature: 40 °C
Detection: UV

Analytes

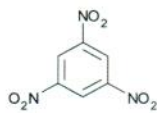
1. Hydrochlorothiazide
2. Methylphenylsulfoxide
3. 1,3,5-Trinitrobenzene
4. Myricetin
5. p-Cresol
6. Sulindac
7. Toluene



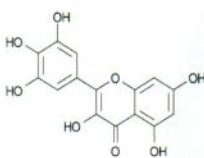
Hydrochlorothiazide



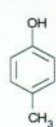
Methylphenylsulfoxide



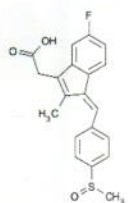
1,3,5-Trinitrobenzene



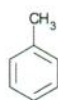
Myricetin



p-Cresol



Sulindac



Toluene

LCC
 ENGINEERING & TRADING GmbH
 Steinbruchstrasse 4, CH-4622 Egerkingen, Switzerland
 Tel.: +41 62 398 5271, Fax.: +41 62 398 5274
info@chemsupply.ch
www.chromatographyshop.com

Pharmaceutically Relevant Compounds (III)

Application #AN2400

Conditions

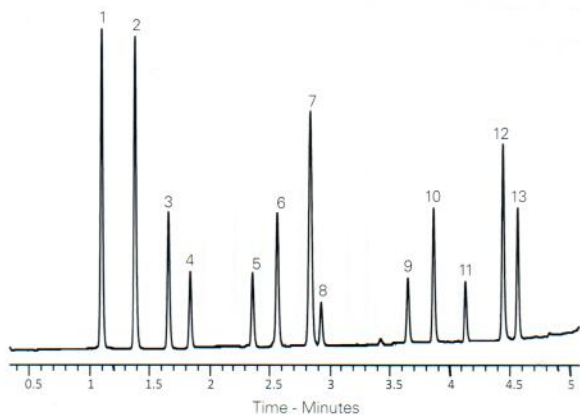
Column: ACE 5 C18-PFP
Dimensions: 150 x 4.6 mm
Part Number: ACE-1210-1546
Mobile Phase: A: 5 mM formic acid in H₂O
 B: 5 mM formic acid in MeOH
Gradient:

Time (mins)	%B
0.0	3
5.0	100
5.5	100
6.0	3
8.5	3

Flow Rate: 1.5 mL/min
Injection: 5 µL
Temperature: 40 °C
Detection: UV, 254 nm

Analytes

1. Paracetamol
2. Hydrochlorothiazide
3. Methylphenylsulfoxide
4. Methylphenylsulfone
5. Aspirin
6. Phenacetin
7. 1,3-Dinitrobenzene
8. 1,2,4-Trimethoxybenzene
9. Ethylbenzoate
10. Nimesulide
11. Ibuprofen
12. Indomethacin
13. Mefenamic acid



Pharmaceutically Relevant Compounds (IV)

Application #AN2460

Conditions

Column: ACE Excel 3 CN-ES
Dimensions: 100 x 2.1 mm
Part Number: EXL-1113-1002U
Mobile Phase: A: 0.1% formic acid in H₂O
 B: 0.1% formic acid in MeCN
Gradient:

Time (mins)	%B
0	3
10	100

Flow Rate: 0.6 mL/min
Temperature: 40 °C
Detection: UV, 210 nm

Analytes

1. 1,3-Dihydroxybenzene
2. Catechol
3. Hydrochlorothiazide
4. Oxprenolol
5. Salicylic acid
6. Myricetin
7. Piroxicam
8. 1,2-Dinitrobenzene
9. Tolmetin
10. 1-Naphthol
11. Piperine
12. Diflunisal
13. Propylbenzene
14. 1,2,3-Trichlorobenzene

