

Pharmaceutically Relevant Compounds (V)

Application #AN2500

Conditions

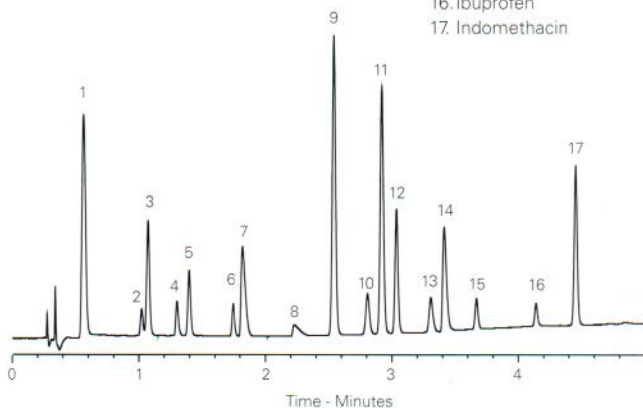
Column: ACE 3 C18-PFP
Dimensions: 50 x 2.1 mm
Part Number: ACE-1110-0502
Mobile Phase: A: 0.1% formic acid in H₂O
 B: 0.1% formic acid in MeOH
Gradient:

Time (mins)	%B
0	3
5	100

Flow Rate: 0.6 mL/min
Temperature: 40 °C
Detection: UV, 254 nm

Analytes

1. Sulphanilamide
2. Nizatidine
3. Metronidazole
4. Amiloride
5. Hydrochlorothiazide
6. Caffeine
7. Pindolol
8. Metoprolol
9. Phenacetin
10. 1,3-Dinitrobenzene
11. Hexobarbital
12. Furosemide
13. Piroxicam
14. Carvedilol
15. Ketoprofen
16. Ibuprofen
17. Indomethacin



Available from



LCC Engineering & Trading GmbH

Steinbruchstrasse 4, CH-4622 Egerkingen, Switzerland

Tel.: +41 62 398 5271, Fax.: +41 62 398 5274

info@chemsupply.ch

www.chromatographyshop.com

her
on
or
port



Pharmaceutically Relevant Mixture (I) – Different Selectivity Using pH

Application #AN1310

Conditions

Column: ACE Ultracore 2.5 SuperC18
Dimensions: 50 x 2.1 mm
Part Number: CORE-25A-0502U
Mobile Phase: A1: 10 mM ammonium formate pH 3 in H₂O
 A2: 0.1% ammonia pH 10.7 in H₂O
 B1: 10 mM ammonium formate pH 3 in MeCN/H₂O (90:10 v/v)
 B2: 0.1% ammonia pH 10.7 in MeCN/H₂O (90:10 v/v)
Gradient:

Time (mins)	%B
0	3
5	100
6	100

Flow Rate: 0.6 mL/min
Temperature: 40 °C
Detection: UV, 254 nm

Analytes

1. Atenolol
2. Methylphenylsulfoxide
3. Eserine
4. Prilocaine
5. Bupivacaine
6. Tetracaine
7. 1,2,3,4-Tetrahydro-1-Naphthol
8. Carvedilol
9. Nitrobenzene
10. Methdilazine
11. Amitriptyline
12. Valerophenone

