

Conditions

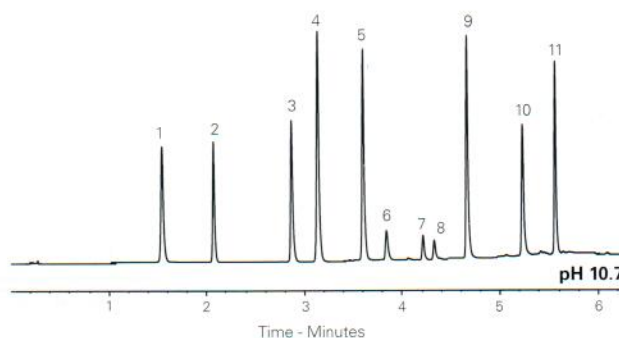
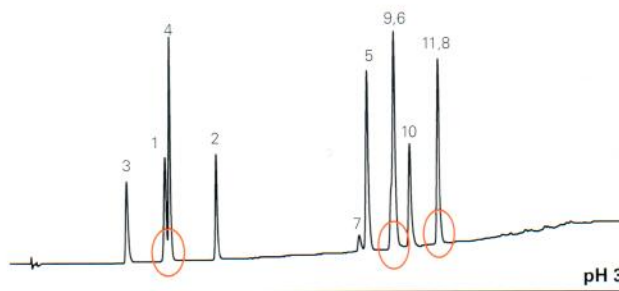
Column: ACE Ultracore 2.5 SuperPhenylHexyl
Dimensions: 50 x 2.1 mm
Part Number: CORE-25B-0502U
Mobile Phase: A1: 10 mM ammonium formate pH 3 in H₂O
 A2: 0.1% ammonia pH 10.7 in H₂O
 B1: 10 mM ammonium formate pH 3 in MeCN/H₂O (90:10 v/v)
 B2: 0.1% ammonia pH 10.7 in MeCN/H₂O (90:10 v/v)
Gradient:

| Time (mins) | %B |
|-------------|-----|
| 0 | 3 |
| 5 | 100 |
| 6 | 100 |

Flow Rate: 0.6 mL/min
Temperature: 40 °C
Detection: UV, 254 nm

Analytes

1. Benzamide
2. Caffeine
3. Procainamide
4. N-Acetylprocainamide
5. Propiophenone
6. Toluene
7. Remacemide
8. Ethylbenzene
9. Carvedilol
10. Nortriptyline
11. Clomipramine



Available from



LCC Engineering & Trading GmbH
 Steinbruchstrasse 4, CH-4622 Egerkingen, Switzerland
 Tel.: +41 62 398 5271, Fax.: +41 62 398 5274
info@chemsupply.ch
www.chromatographyshop.com

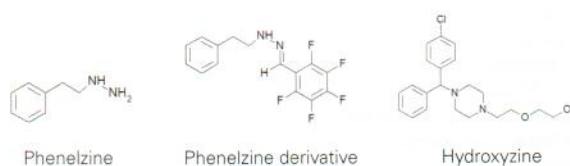
Phenelzine in Human Plasma by LC-MS/MS

Conditions

Column: ACE 5 C18
Dimensions: 100 x 4.6 mm
Part Number: ACE-121-1046
Mobile Phase: 10 mM ammonium acetate in H₂O, pH 4.0/MeOH (20:80 v/v)
Flow Rate: 1 mL/min with 70% split flow into MS
Injection: 10 µL
Temperature: 45 °C
Detection: AB Sciex API-4000 MS
 MRM using ESI in positive ion mode
 TurbolonSpray Interface Temperature: 600 °C
 IonSpray Voltage: 5500 V
Sample: Phenelzine derivatised with pentafluorobenzaldehyde, followed by SPE extraction of derivative and hydroxyzine (I.S.) from 200 µL human plasma.

Analytes

1. Phenelzine derivative
(m/z 305.1 → 105.1)
20.2 ng/mL
2. Hydroxyzine
(m/z 375.3 → 201.1)
25 ng/mL



Spiked human plasma

