

Conditions

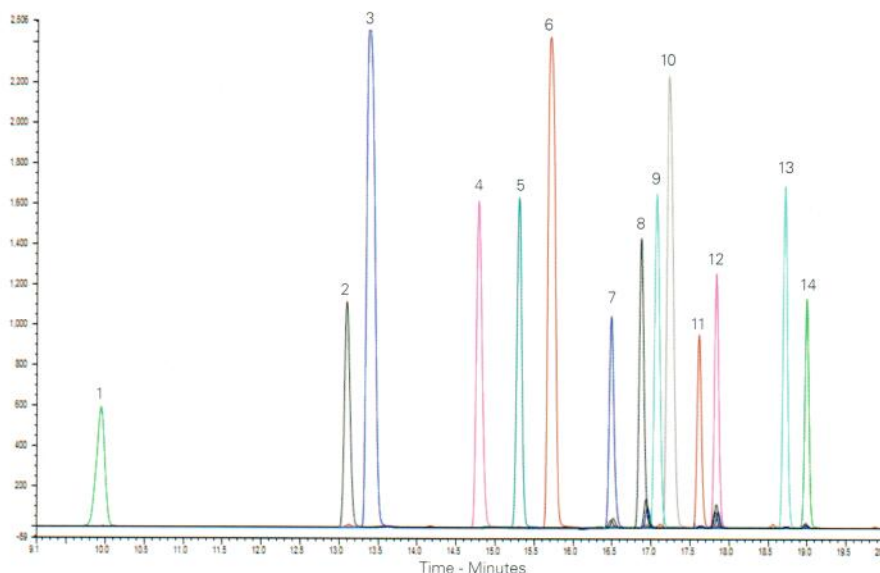
Column: ACE 3 C18-PFP
Dimensions: 150 x 4.6 mm
Part Number: ACE-1110-1546
Mobile Phase: A: 0.1% formic acid in H₂O
 B: MeOH
Gradient:

Time (mins)	%B
0.0	10
20.0	100

Flow Rate: 1 mL/min
Injection: 10 µL
Temperature: 35 °C
Detection: UV, 280 nm

Analytes

- | | | |
|-----------------------|-------------|------------|
| 1. Phenol | 6. 6-CP | 11. 2,4-DP |
| 2. o-Cresol | 7. 2,4-D | 12. CMPP |
| 3. 2-Chlorophenol | 8. MCPA | 13. 2,4-DB |
| 4. 4-Chlorophenol | 9. PCOC | 14. MCPB |
| 5. 2,6-Dichlorophenol | 10. 2,4-DCP | |



Available from



LCC Engineering & Trading GmbH

Steinbruchstrasse 4, CH-4622 Egerkingen, Switzerland
 Tel.: +41 62 398 5271, Fax.: +41 62 398 5274

info@chemsupply.ch

www.chromatographyshop.com

Reproduced with permission of Nufarm UK Ltd

Phenolic Acids

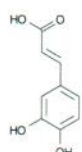
Application #AN3030

Conditions

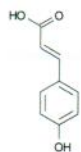
Column: ACE 5 C18
Dimensions: 150 x 4.6 mm
Part Number: ACE-121-1546
Mobile Phase: MeCN/0.1% formic acid in H₂O (20:80 v/v)
Flow Rate: 1 mL/min
Injection: 1 µL
Temperature: Ambient
Detection: UV, 254 nm

Analytes

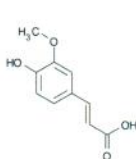
1. Caffeic acid
2. p-Coumaric acid
3. Ferulic acid



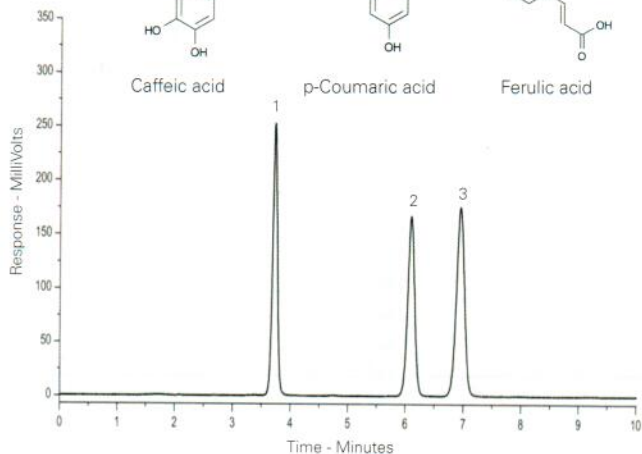
Caffeic acid



p-Coumaric acid



Ferulic acid



Phenolic Compounds in Ground Water & Landfill Leachates

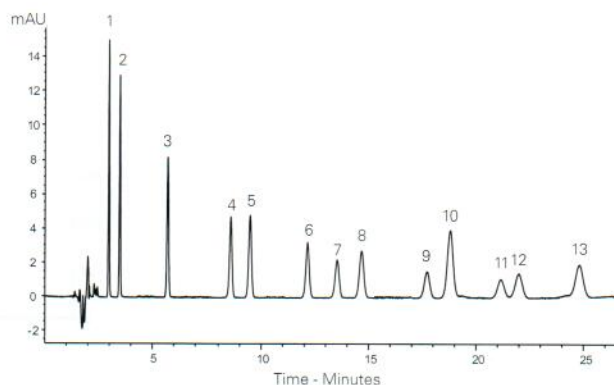
Application #AN3070

Conditions

Column: ACE Excel 3 C18-Amide
Dimensions: 150 x 4.6 mm
Part Number: EXL-1112-1546U
Mobile Phase: 0.1% formic acid v/v in H₂O MeCN (65:35 v/v)
Flow Rate: 1 mL/min
Injection: 10 µL
Temperature: 30 °C
Detection: UV, 274 nm

Analytes

1. Pyrocatechol
2. Resorcinol
3. Phenol
4. m-Cresol
5. o-Cresol
6. 2,4-Dimethylphenol
7. 3,4-Dimethylphenol
8. 3,5-Dimethylphenol
9. 1-Naphthol
10. 3,4,5-Trimethylphenol
11. 2,3,6-Trimethylphenol
12. 2,4,6-Trimethylphenol
13. 2-Naphthol



Reproduced with permission of Environmental Scientific Group Ltd, UK