

Conditions

Column: ACE 2 C4
Dimensions: 100 x 2.1 mm
Part Number: EXL-103-1002U
Mobile Phase: A: 2 mM ammonium acetate/MeCN (20:80 v/v)
 B: IPA

Gradient:

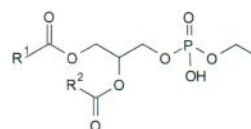
Time (mins)	%B
0.00	10
1.00	10
3.00	60
3.01	100
5.00	100
5.10	10

Flow Rate: 0.4 mL/min
Injection: 5 µL
Temperature: 40 °C
Detection: AB SCIEX triple quad 5500
 Turbo IonSpray negative mode ESI
 IonSpray Voltage: -4500 V
 Temperature: 650 °C

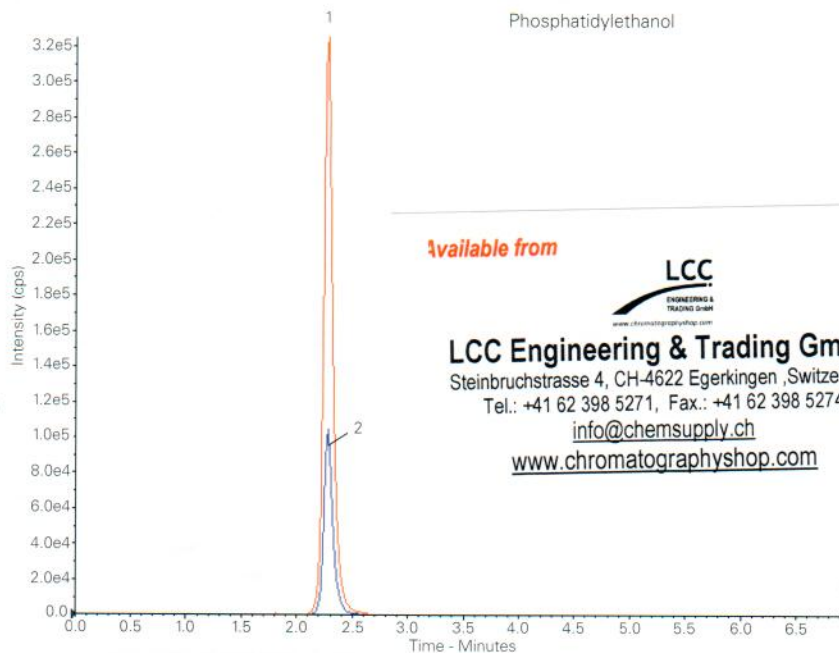
Phosphatidylethanol (PEth) measurement in blood is used as a biomarker of chronic alcohol use/abuse.

Analytes

1. R1/R2 = 18:1/18:1
(m/z 701.4 → 281.2)
2. R1/R2 = 16:1/16:1
(m/z 701.4 → 255.1)



Phosphatidylethanol



available from



LCC Engineering & Trading GmbH
 Steinbruchstrasse 4, CH-4622 Egerkingen, Switzerland
 Tel.: +41 62 398 5271, Fax.: +41 62 398 5274
info@chemsupply.ch
www.chromatographyshop.com

Reproduced with permission of Biotage GB Ltd, UK

Phytoestrogens from Hop Extract by LC-MS/MS

Conditions

Column: ACE 3 C18-AR
Dimensions: 150 x 4.6 mm
Part Number: ACE-119-1546
Mobile Phase: A: 1% formic acid in MeCN
 B: 1% formic acid in MeOH
 C: 1% formic acid in H₂O
 D: MeOH

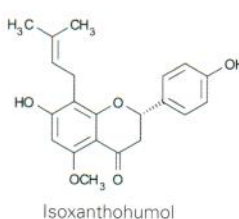
Gradient:

Time (mins)	%A	%B	%C	%D
0	56	0	44	0
8	51	5	44	0
10	51	5	44	0
17	95	5	0	0
22	95	0	0	5

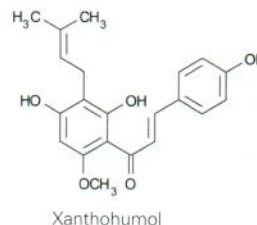
Flow Rate: 0.6 mL/min
Detection: TSQ-Quantum triple quad ESI
 Spray voltage: -4500 V
 Precursor ion: 355.4 [M+H]⁺
 MRM transition ions: 179 and 299
 Collision energy: 28 and 16 V

Analytes

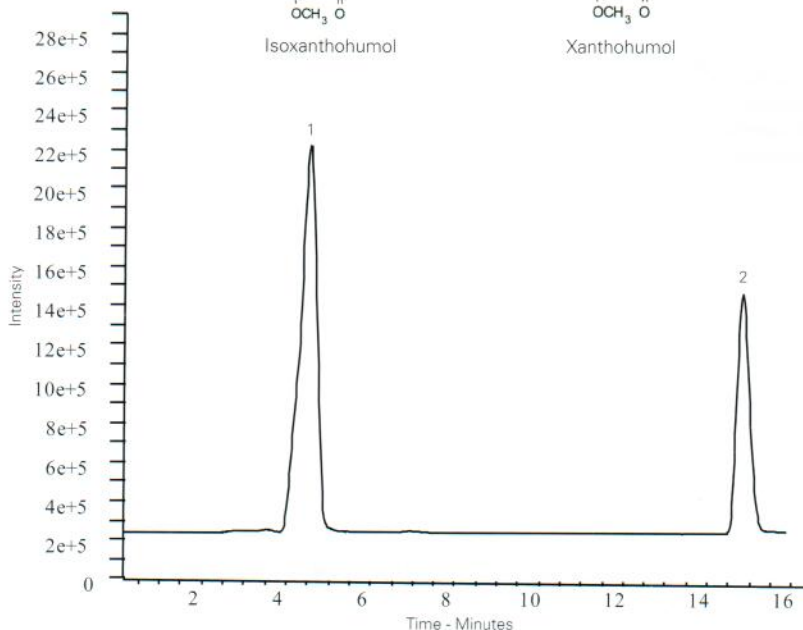
1. Isoxanthohumol
LOQ 0.07 µg/mL
2. Xanthohumol
LOQ 0.01 µg/mL



Isoxanthohumol



Xanthohumol



Reproduced with permission of Institute of Food Science Research, University of Madrid, Spain