

Polar Compounds Separation

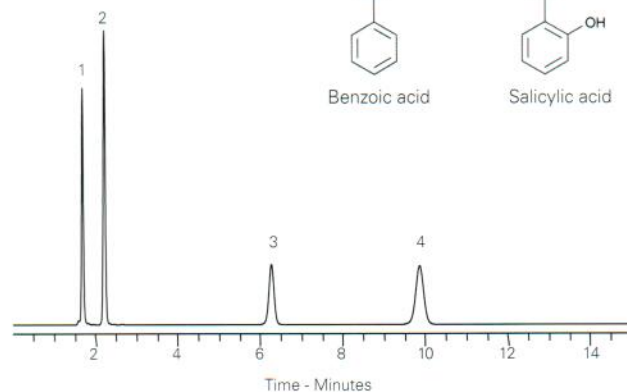
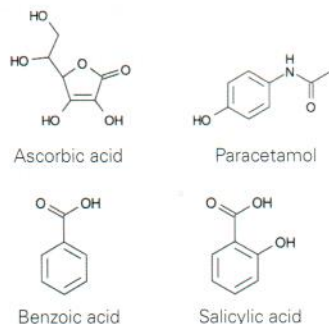
Application #AN1590

Conditions

Column: ACE Excel 5 CN-ES
Dimensions: 150 x 4.6 mm
Part Number: EXL-1213-1546U
Mobile Phase: MeOH/H₂O (50:50 v/v)
Flow Rate: 1 mL/min
Injection: 5 µL
Temperature: 20 °C
Detection: UV, 254 nm

Analytes

1. Ascorbic acid
2. Paracetamol
3. Benzoic acid
4. Salicylic acid



Polyamines

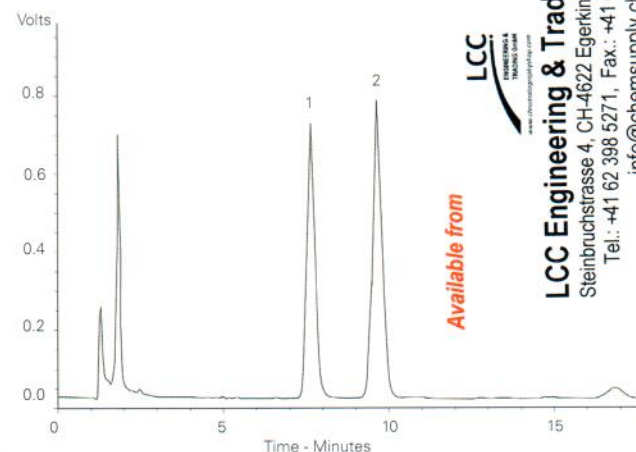
Application #AN3740

Conditions

Column: ACE 5 C18
Dimensions: 150 x 4.6 mm
Part Number: ACE-121-1546
Mobile Phase: TRIS buffer pH 7.0/MeOH (10:90 v/v)
Flow Rate: 1.2 mL/min
Detection: Fluorescence – λ_{ex} 340 nm, λ_{em} 4

Analytes

1. Putrescine
2. Cadaverine (as OPA derivatives)



LCC
 LCC Engineering & Trading GmbH

LCC Engineering & Trading GmbH
 Steinbruchstrasse 4, CH-4622 Egerkingen, Switzerland
 Tel.: +41 62 398 5271, Fax.: +41 62 398 5274

info@chemsupply.ch
 www.chromatographyshop.com

Reproduced with permission of Centre for Chemical Sciences, Royal Holloway University of London, UK

Polycyclic Tetracarboxylic Acids

Application #AN1340

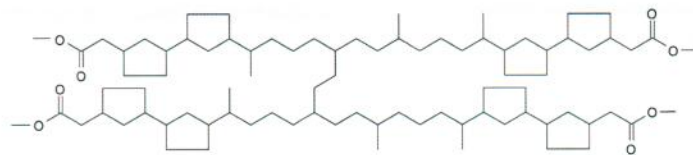
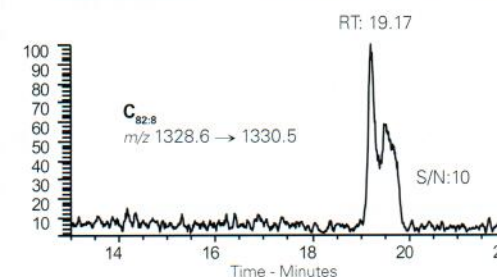
Conditions

Column: ACE UltraCore 2.5 SuperPhenylHexyl
Dimensions: 100 x 2.1 mm
Part Number: CORE-25B-1002U
Mobile Phase: A: 10 mM ammonium acetate in MeOH/H₂O (98:2 v/v)
 B: 10 mM ammonium acetate in IPA/H₂O (98:2 v/v)
Gradient:

Time (mins)	%B
0.0	0
1.0	0
15.0	100
25.0	100

Flow Rate: 0.15 mL/min
Injection: 5 µL
Temperature: Ambient
Detection: LCQ Ion trap MS

C₈₀₋₈₂ polycyclic tetracarboxylic acids isolated from oilfield deposits



Reproduced with permission of Petroleum & Environmental Geochemistry Group, Plymouth University, UK