

Conditions

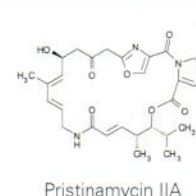
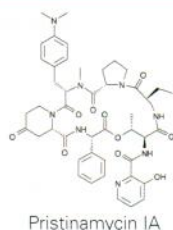
Column: ACE 3 C18
Dimensions: 30 x 3.0 mm
Part Number: ACE-111-0303
Mobile Phase: A: 1 mM ammonium formate + 0.1 % formic acid in MeCN/H₂O (35:65 v/v)
 B: MeCN
Gradient:

Time (mins)	%B
0.00	0
0.30	0
0.31	10
1.60	10
1.61	100
2.60	100
2.61	0
4.00	0

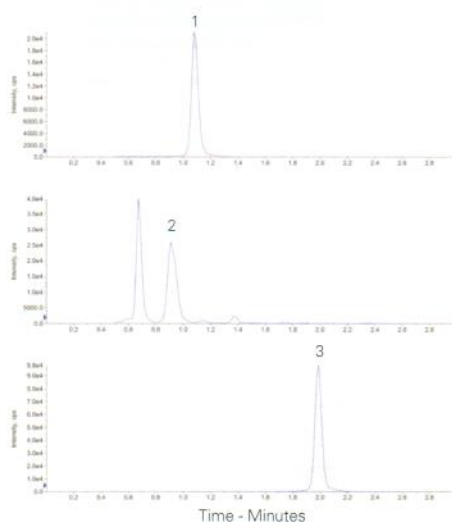
Flow Rate: 1 mL/min
Injection: 10 µL
Temperature: 25 °C
Detection: MDSol Sciex API 4000
 TurbolonSpray positive mode

Analytes

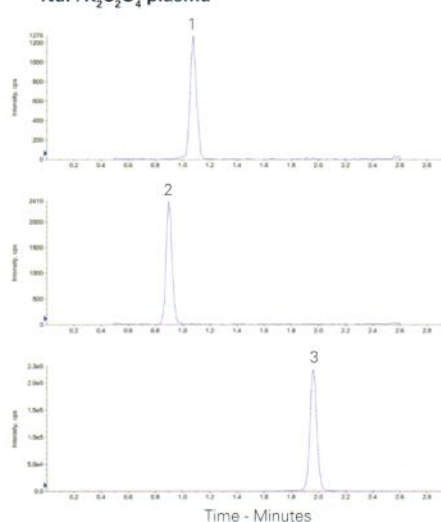
1. Pristinamycin IA
(m/z 867.5 → 134.2)
2. Pristinamycin IIA
(m/z 526.3 → 355.1)
3. Virginiamycin (IS)
(m/z 824.6 → 134.0)



Processed study sample containing pristinamycin IA and IIA



Low calibration standard containing 2.5 ng/mL each of pristinamycin IA and IIA in human NaF/K₂C₂O₄ plasma



Available from



LCC Engineering & Trading GmbH
 Steinbruchstrasse 4, CH-4622 Egerkingen, Switzerland
 Tel.: +41 62 398 5271, Fax.: +41 62 398 5274
 info@chemsupply.ch
 www.chromatographyshop.com

Reproduced with permission of inVentiv Health Clinical, Quebec, Canada

Proanthocyanidins from Cinnamon Bark Extract

Conditions

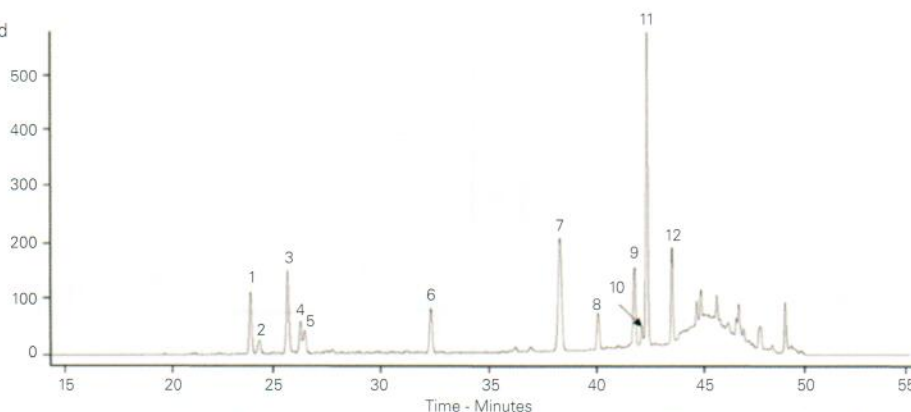
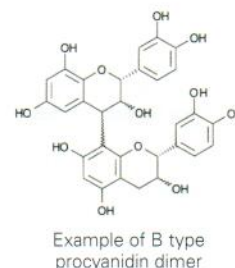
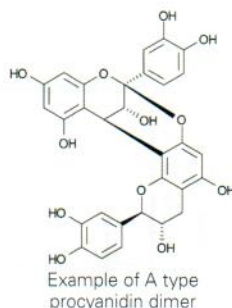
Column: ACE 3 C18
Dimensions: 250 x 4.6 mm
Part Number: ACE-111-2546
Mobile Phase: A: 1 % acetic acid in H₂O
 B: MeCN
Gradient:

Time (mins)	%B
0	36
35	36
40	50
45	100
55	0
60	0

Flow Rate: 0.75 mL/min
Temperature: Ambient
Detection: UV, 280 nm
Sample: Cinnamon bark extract thiolysed with benzyl mercaptan

Analytes

1. Catechin
 2. A-type PC dimer
 3. A-type PC trimer
 4. Epicatechin
 5. A-type PC trimer
 6. IS
 7. cis-Cinnamic acid
 8. A-type PC-BM trimer
 9. trans-Cinnamic acid
 10. cis-Catechin-BM
 11. Epicatechin-BM
 12. A-type PC-BM dimer
- PC = Procyanidin
 BM = Benzyl mercaptan adduct



Williams, A. R. et al. Anthelmintic activity of trans-cinnamaldehyde and A and B-type proanthocyanidins derived from cinnamon (*Cinnamomum verum*). Sci. Rep. 5, 14791; doi:10.1038/srep14791 (2015).