

Conditions

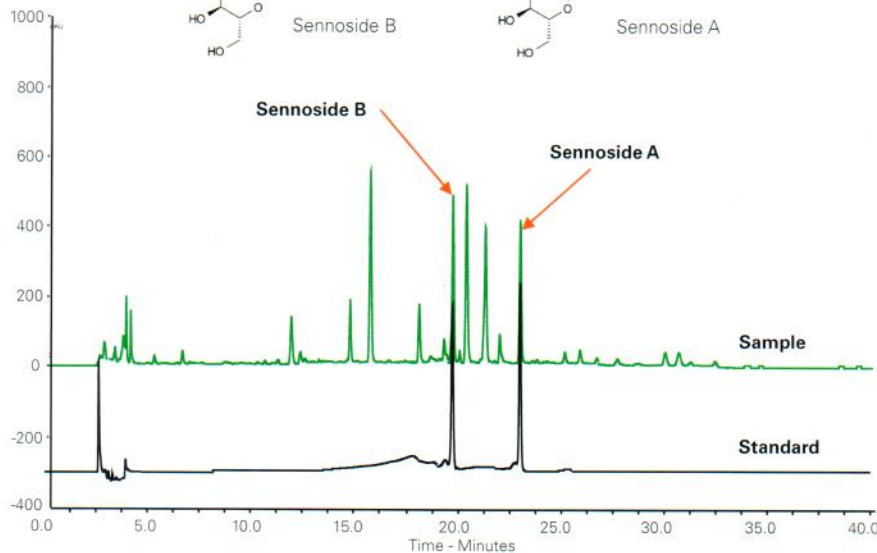
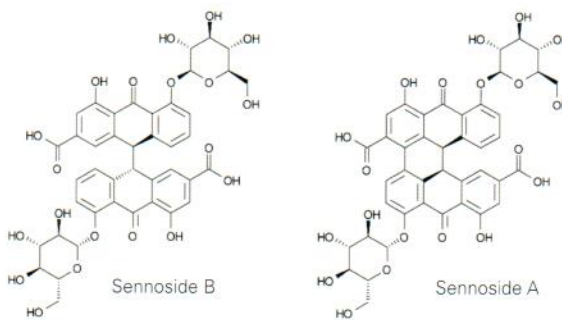
Column: ACE 3 C18-PFP
Dimensions: 150 x 4.6 mm
Part Number: ACE-1110-1546
Mobile Phase: A: 0.75% acetic acid in H₂O
 B: MeCN/MeOH (90:10 v/v)
Gradient:

Time (mins)	%B
0	9
23	28
40	28

Flow Rate: 0.6 mL/min
Temperature: 35 °C
Detection: UV, 271 nm
Sample: Herbal tea bag containing Folium Sennae, Peppermint, Folium Mori, Folium Nelumbinis, Glycyrrhiza Uralensis and Lalang Grass Rhizome

Analytes

Sennoside A
 Sennoside B



Available from



LCC Engineering & Trading GmbH
 Steinbruchstrasse 4, CH-4622 Egerkingen, Switzerland
 Tel.: +41 62 398 5271, Fax.: +41 62 398 5274
 info@chemsupply.ch
 www.chromatographyshop.com

Reproduced with permission of Vercotech Inc., Taiwan

Sotalol

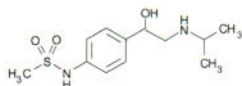
Application #AN3700

Conditions

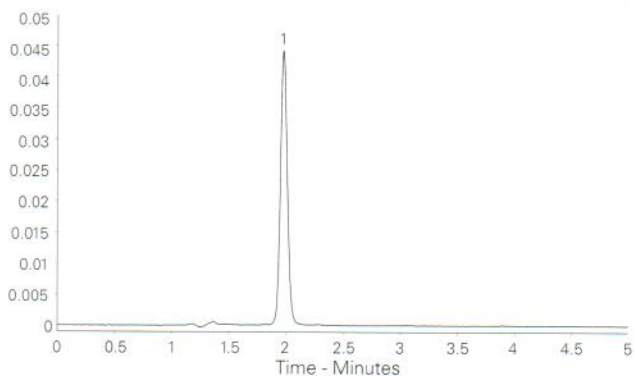
Column: ACE 5 CN
Dimensions: 150 x 4.6 mm
Part Number: ACE-124-1546
Mobile Phase: 20 mM ammonium formate pH 3.0/MeOH (85:15 v/v)
Flow Rate: 1 mL/min
Injection: 20 µL (0.2mg/mL solution)
Temperature: Ambient
Detection: UV, 254 nm

Analyte

1. Sotalol



Sotalol



Reproduced with permission of School of Pharmacy, University of Sunderland, UK

Snake Venom from *Crotalus Durissus Terrificus*

Application #AN4190

Conditions

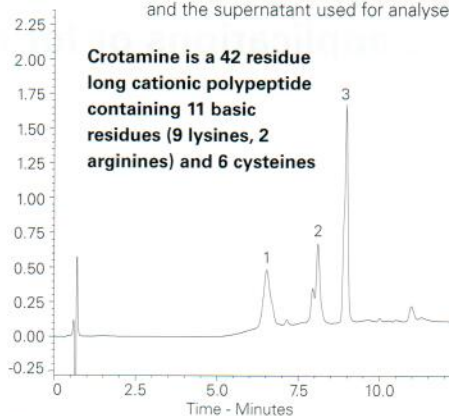
Column: ACE 3 C8-300
Dimensions: 50 x 4.6 mm
Part Number: ACE-212-0546
Mobile Phase: A: 0.1% TFA in H₂O
 B: 0.1% TFA in MeCN/H₂O (90:10 v/v)
Gradient:

Time (mins)	%B
0	20
2	20
27	70

Analytes

1. Crotaamine
2. Crotaopotin
3. Phospholipase A2 (PLA₂)

Flow Rate: 1.2 mL/min
Injection: 20 µL
Detection: UV, 214 nm
Sample: Lyophilised crude venom powder was solubilised (1 mg/mL) in 0.1% TFA. Resulting solutions were centrifuged and the supernatant used for analyses.



Crotaamine is a 42 residue long cationic polypeptide containing 11 basic residues (9 lysines, 2 arginines) and 6 cysteines



Reproduced with permission of Center for the Study of Venoms and Venomous Animals, (CEVAP), UNESP, Sao Paulo State University, Brazil