

Conditions

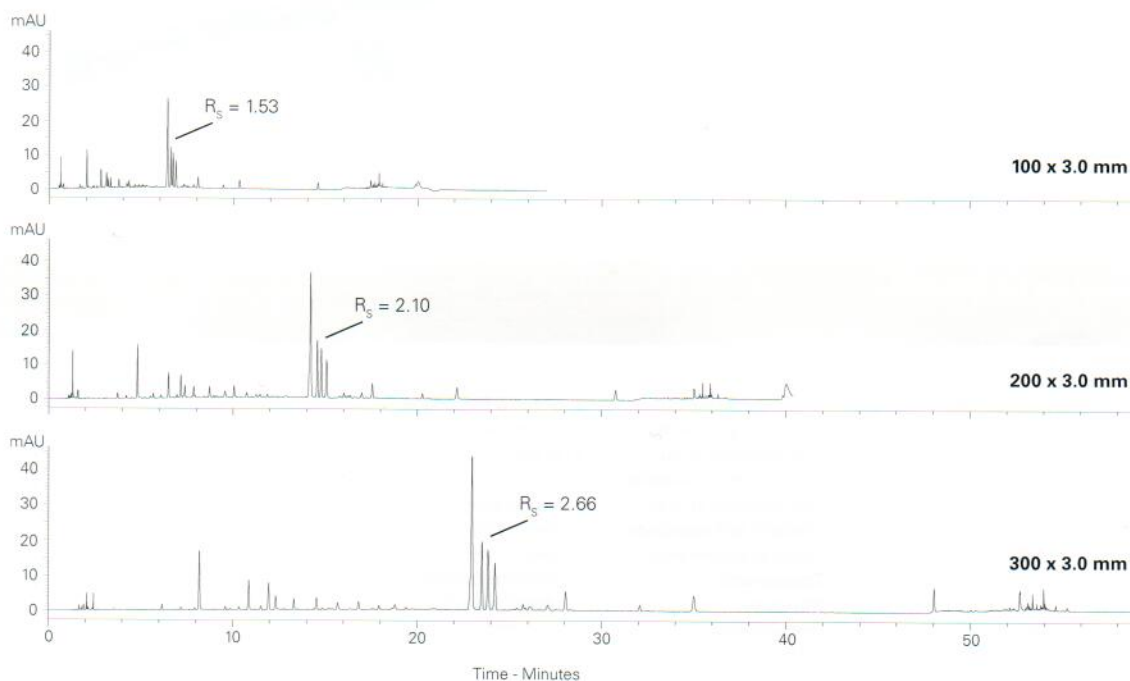
Column: ACE Excel 1.7 SuperC18
Dimensions: 100 x 3.0 mm; 2 x 100 x 3.0 mm (coupled); 3 x 100 x 3.0 mm (coupled)
Part Number: EXL-1711-1003U
Mobile Phase: A: 0.1% formic acid in H₂O
 B: 0.1% formic acid in MeCN

Gradient:	Time (mins)			%B
	100 x 3.0 mm	200 x 3.0 mm	300 x 3.0 mm	
-	0.00	0.00	0.00	5
0.00	0.35	0.71	0.71	5
15.00	30.35	45.71	45.71	30
17.00	34.35	51.71	51.71	100
19.00	38.35	57.71	57.71	100
20.00	39.35	58.71	58.71	5
27.00	53.35	79.71	79.71	5

Flow Rate: 0.8 mL/min
Injection: 2 µL (100 x 3.0 mm); 4 µL (200 x 3.0 mm); 6 µL (300 x 3.0 mm)
Temperature: 80 °C
Detection: UV, 280 nm
Sample: Tablet ground to fine powder and extracted with MeCN/H₂O (1:1 v/v) with ultrasonication. Supernatant diluted with H₂O and filtered using Whatman Mini-Uniprep syringeless filter
System: Chromaster Ultra Rs



Hypericum perforatum



Available from



LCC Engineering & Trading GmbH

Steinbruchstrasse 4, CH-4622 Egerkingen, Switzerland

Tel.: +41 62 398 5271, Fax.: +41 62 398 5274

info@chemsupply.ch

www.chromatographyshop.com