

## Statins – Atorvastatin

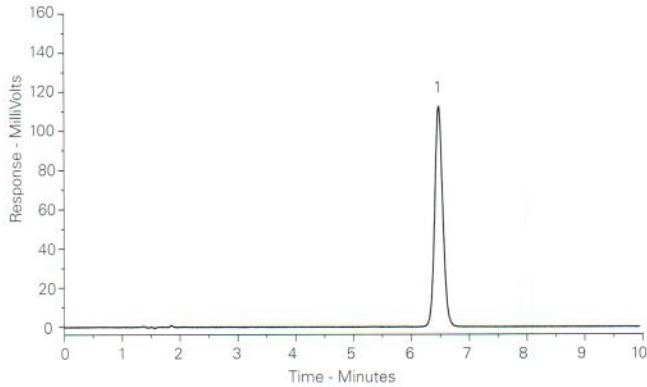
Application #AN3310

### Conditions

**Column:** ACE 5 C18  
**Dimensions:** 150 x 4.6 mm  
**Part Number:** ACE-121-1546  
**Mobile Phase:** 10 mM ammonium formate  
pH 3.0/MeCN (47:53 v/v)  
**Flow Rate:** 1 mL/min  
**Injection:** 5 µL  
**Temperature:** Ambient  
**Detection:** UV, 254 nm

### Analyte

1. Atorvastatin



## Statins – Fluvastatin

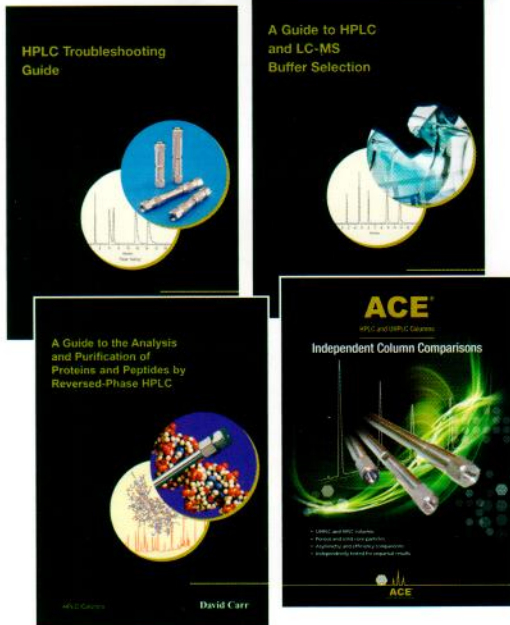
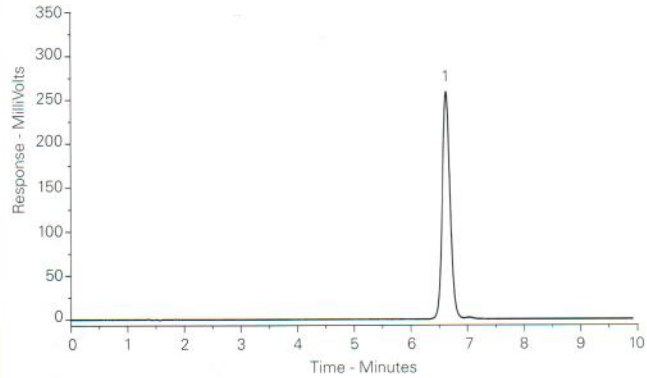
Application #AN3320

### Conditions

**Column:** ACE 5 C18  
**Dimensions:** 150 x 4.6 mm  
**Part Number:** ACE-121-1546  
**Mobile Phase:** 10 mM ammonium formate  
pH 3.0/MeCN (47:53 v/v)  
**Flow Rate:** 1 mL/min  
**Injection:** 5 µL  
**Temperature:** Ambient  
**Detection:** UV, 254 nm

### Analyte

1. Fluvastatin



## FREE HPLC Technical Guides

- HPLC Column Comparison Guide
- HPLC Protein and Peptide Guide
- HPLC & LC-MS Buffer Selection Guide
- HPLC Troubleshooting Guide

g  
Ca

Available from

LCC  
ENGINEERING & TRADING GmbH  
www.chromatographyshop.com

### LCC Engineering & Trading GmbH

Steinbruchstrasse 4, CH-4622 Egerkingen, Switzerland  
Tel.: +41 62 398 5271, Fax.: +41 62 398 5274

[info@chemsupply.ch](mailto:info@chemsupply.ch)

[www.chromatographyshop.com](http://www.chromatographyshop.com)