

## Substituted Methoxybenzene Isomers

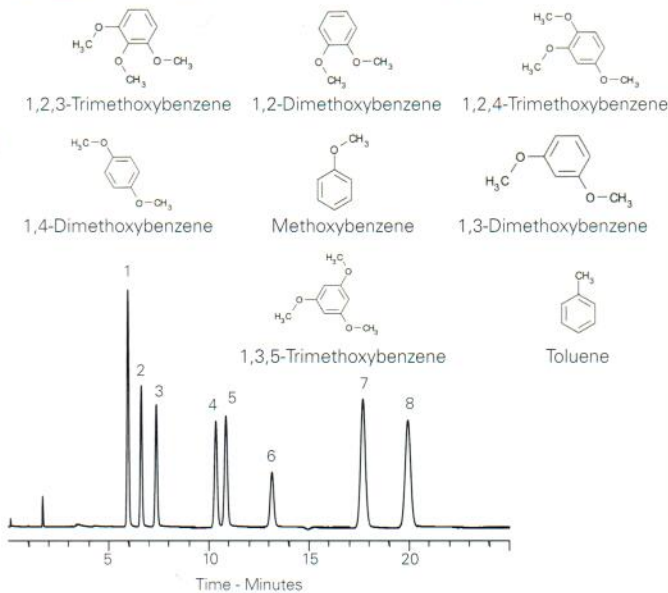
Application #AN2430

### Conditions

**Column:** ACE 3 C18-PFP  
**Dimensions:** 150 x 4.6 mm  
**Part Number:** ACE-1110-1546  
**Mobile Phase:** H<sub>2</sub>O/MeOH (50:50 v/v)  
**Flow Rate:** 1 mL/min  
**Injection:** 5 µL  
**Temperature:** 40 °C  
**Detection:** UV, 214 nm

### Analytes

- 1,2,3-Trimethoxybenzene
- 1,2-Dimethoxybenzene
- 1,2,4-Trimethoxybenzene
- 1,4-Dimethoxybenzene
- Methoxybenzene
- 1,3-Dimethoxybenzene
- 1,3,5-Trimethoxybenzene
- Toluene



## Sugars – Cola vs Diet Cola

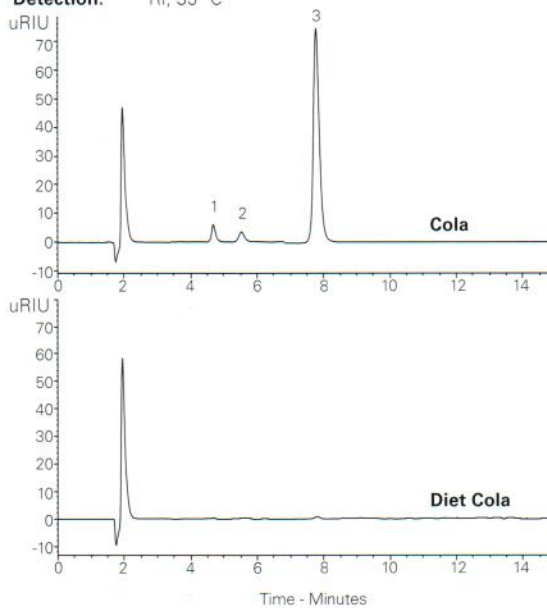
Application #AN4150

### Conditions

**Column:** ACE Excel 3 NH<sub>2</sub>  
**Dimensions:** 150 x 4.6 mm  
**Part Number:** EXL-1114-1546U  
**Mobile Phase:** MeCN/H<sub>2</sub>O (75:25 v/v)  
**Flow Rate:** 1 mL/min  
**Injection:** 10 µL  
**Temperature:** 35 °C  
**Detection:** RI, 35 °C

### Analytes

1. Fructose
2. Glucose
3. Sucrose



## Sugars – Disaccharides

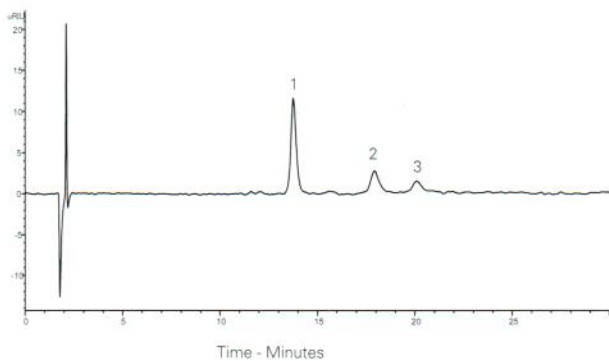
Application #AN4320

### Conditions

**Column:** ACE Excel 3 NH<sub>2</sub>  
**Dimensions:** 150 x 4.6 mm  
**Part Number:** EXL-1114-1546U  
**Mobile Phase:** MeCN/H<sub>2</sub>O (80:20 v/v)  
**Flow Rate:** 1 mL/min  
**Injection:** 20 µL  
**Temperature:** 35 °C  
**Detection:** RI, 35 °C  
**Sample:** 2 mg/mL each disaccharide in MeCN/H<sub>2</sub>O (80:20 v/v)  
**System:** Chromaster 600

### Analytes

1. Sucrose
2. Maltose
3. Lactose



## Sugars – Lactulose

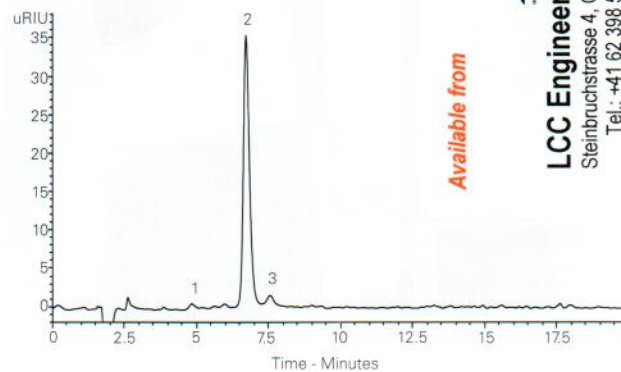
Application #AN4020

### Conditions

**Column:** ACE Excel 5 NH<sub>2</sub>  
**Dimensions:** 150 x 4.6 mm  
**Part Number:** EXL-1214-1546U  
**Mobile Phase:** MeCN/H<sub>2</sub>O (70:30 v/v)  
**Flow Rate:** 1 mL/min  
**Injection:** 10 µL  
**Temperature:** 35 °C  
**Detection:** RI, 35 °C

### Analytes

1. Galactose
2. Lactulose
3. Lactose



Available from



**LCC Engineering & Trading GmbH**

Steinbruchstrasse 4, CH-4622 Egerkingen, Switzerland  
 Tel.: +41 62 398 5271, Fax.: +41 62 398 5274

info@chemsupply.ch

www.chromatographyshop.com