

## Sugars – Orange Juice

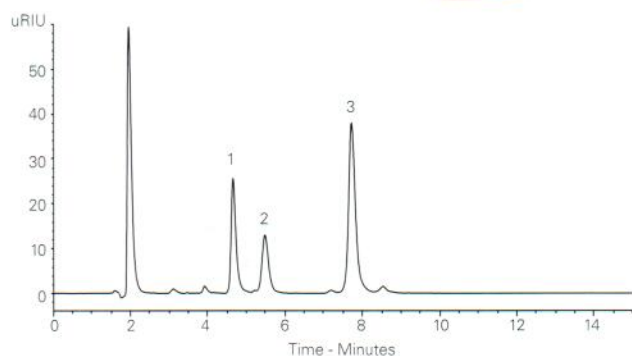
Application #AN4160

### Conditions

**Column:** ACE Excel 3 NH<sub>2</sub>  
**Dimensions:** 150 x 4.6 mm  
**Part Number:** EXL-1114-1546U  
**Mobile Phase:** MeCN/H<sub>2</sub>O (75:25 v/v)  
**Flow Rate:** 1 mL/min  
**Injection:** 10 µL  
**Temperature:** 35 °C  
**Detection:** RI, 35 °C

### Analytes

1. Fructose
2. Glucose
3. Sucrose



## Sugars Separation

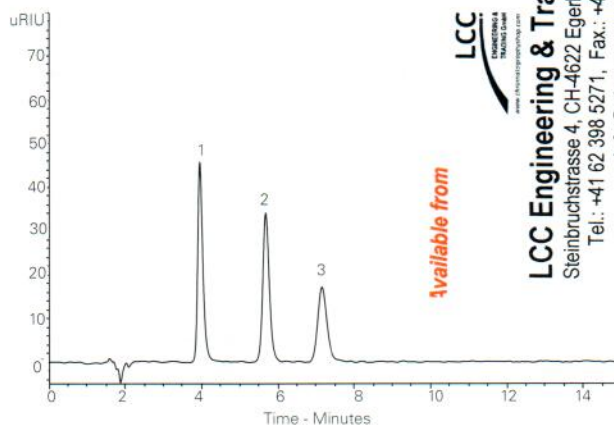
Application #AN4030

### Conditions

**Column:** ACE Excel 5 NH<sub>2</sub>  
**Dimensions:** 150 x 4.6 mm  
**Part Number:** EXL-1214-1546U  
**Mobile Phase:** MeCN/H<sub>2</sub>O (70:30 v/v)  
**Flow Rate:** 1 mL/min  
**Injection:** 10 µL  
**Temperature:** 35 °C  
**Detection:** RI, 35 °C

### Analytes

1. Fructose
2. Sucrose
3. Lactose



LCC  
 ENGINEERING & TRADING GMBH  
 www.lcc-engineering.com

Available from

**LCC Engineering & Trading GmbH**  
 Steinbruchstrasse 4, CH-4622 Egerkingen, Switzerland  
 Tel.: +41 62 398 5271, Fax.: +41 62 398 5274  
 info@chemsupply.ch  
 www.chromatographyshop.com

## Sulfonamides

Application #AN1610

### Conditions

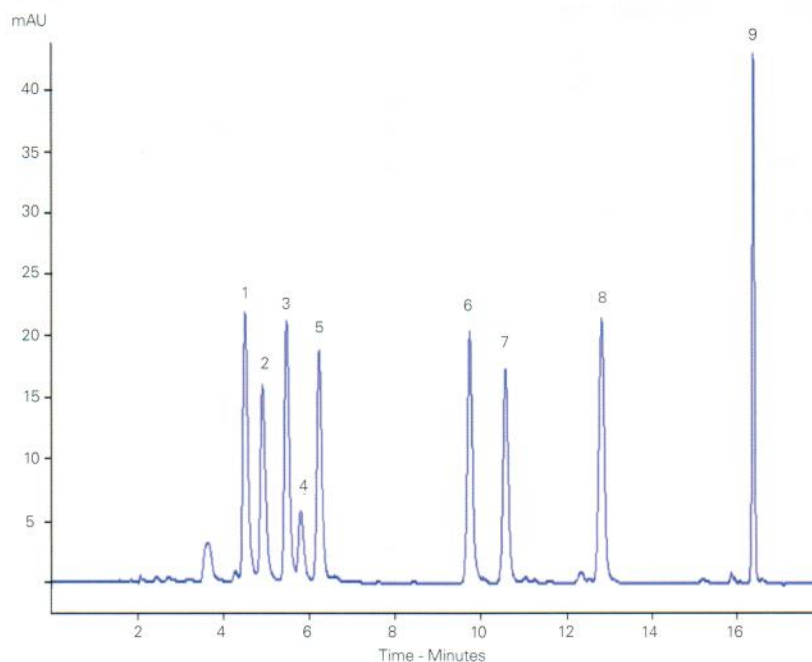
**Column:** ACE Excel 3 C18-PFP  
**Dimensions:** 150 x 4.6 mm  
**Part Number:** EXL-1110-1546U  
**Mobile Phase:** A: H<sub>2</sub>O  
 B: MeCN  
 C: 10% formic acid  
**Gradient:**

Time (mins)	%A	%B	%C
0	84	15	1
12	74	25	1
14	59	40	1
16	84	15	1
18	84	15	1

**Flow Rate:** 1 mL/min  
**Detection:** UV, 268 nm

### Analytes

- |                  |                       |                          |
|------------------|-----------------------|--------------------------|
| 1. Sulfadiazine  | 4. Sulfamoxole        | 7. Sulfachloropyridazine |
| 2. Sulfapyridine | 5. Sulfamethazine     | 8. Sulfamethoxazole      |
| 3. Sulfamerazine | 6. Sulfamonomethoxine | 9. Sulfadimethoxine      |



Reproduced with permission of National Research Institute of Agriculture and Food Technology INIA, Spain