

Conditions

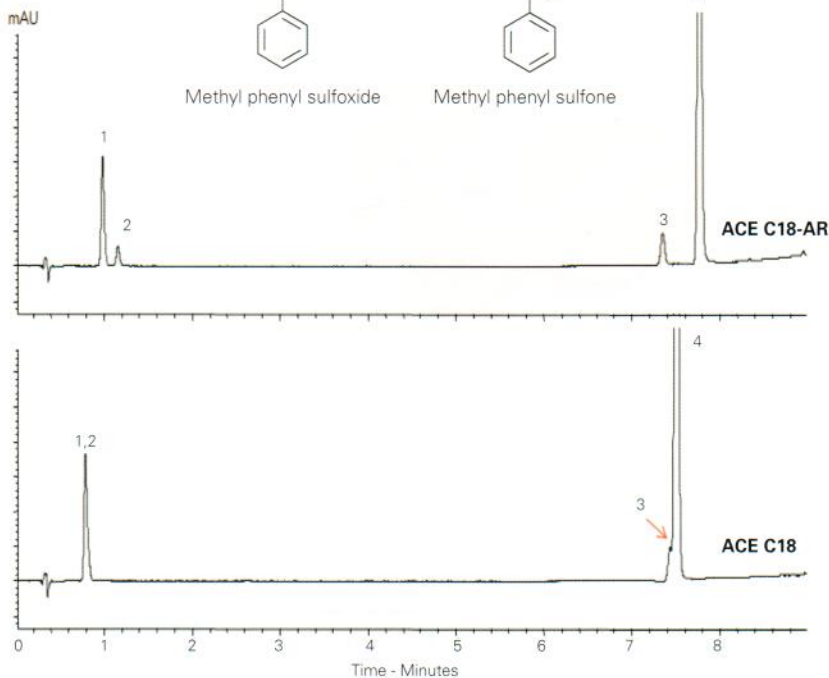
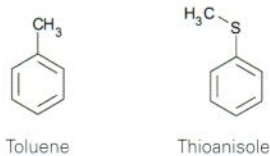
**Column:** ACE 3 C18-AR, ACE 3 C18  
**Dimensions:** 50 x 2.1 mm  
**Part Number:** ACE-119-0502, ACE-111-0502  
**Mobile Phase:** A: H<sub>2</sub>O  
 B: MeOH  
**Gradient:**

Time (mins)	%B
0.0	30
5.0	30
9.0	95
9.5	30
13.5	30

  
**Flow Rate:** 0.5 mL/min  
**Injection:** 1 µL  
**Temperature:** 22 °C  
**Detection:** UV, 254 nm

Analytes

1. Methyl phenyl sulfoxide
2. Methyl phenyl sulfone
3. Toluene
4. Thioanisole



Sumatriptan and Promethazine by LC-MS/MS

Conditions

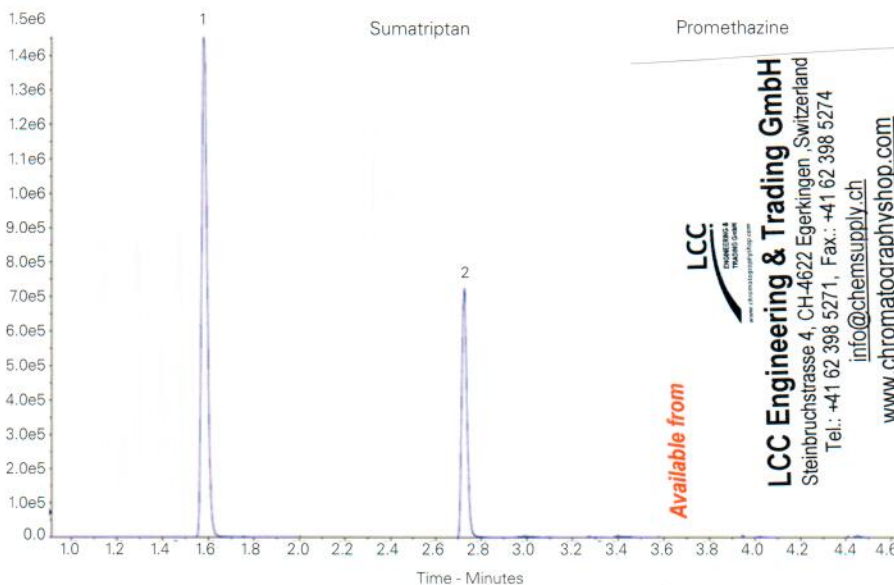
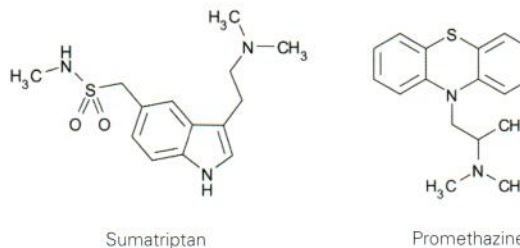
**Column:** ACE Excel 2 C18-PFP  
**Dimensions:** 100 x 2.1 mm  
**Part Number:** EXL-1010-1002U  
**Mobile Phase:** A: 0.1% formic acid in H<sub>2</sub>O  
 B: 0.1% formic acid in MeOH  
**Gradient:**

Time (mins)	%B
0.0	15
0.5	15
2.5	90
3.5	90
5.5	15

  
**Flow Rate:** 0.7 mL/min  
**Temperature:** 50 °C  
**Detection:** AB Sciex QTRAP 6500  
 DuoSpray Ion source (ESI/APCI)  
 Positive ion MRM mode

Analytes

1. Sumatriptan  
(m/z 296 → 58)
2. Promethazine  
(m/z 286 → 86)



Available from

LCC

LCC Engineering & Trading GmbH  
 Steinbruchstrasse 4, CH-4622 Egerkingen, Switzerland  
 Tel.: +41 62 398 5271, Fax: +41 62 398 5274  
 info@chemsupply.ch  
 www.chromatographyshop.com