

Conditions

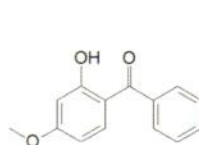
Column: ACE 3 C18
Dimensions: 150 x 4.0 mm
Part Number: ACE-111-1504
Mobile Phase: A: MeOH/H₂O (85:15 v/v)
 B: THF
Gradient:

| Time (mins) | %B |
|-------------|----|
| 0 | 0 |
| 7 | 0 |
| 10 | 50 |
| 14 | 50 |
| 16 | 0 |

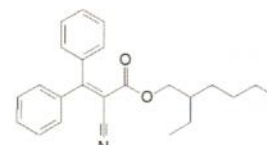
Flow Rate: 0.85 mL/min
Temperature: 30 °C
Detection: UV, 310 nm
Sample: 40 µg/mL each standard

Analytes

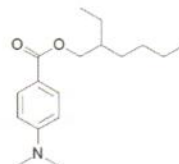
1. Benzophenone-3
2. Octocrylene
3. Octyl dimethyl PABA
4. Octyl methoxycinnamate
5. Avobenzone
6. Ethylhexyl salicylate
7. Homosalate
8. Ethylhexyl triazone
9. Tinosorb® M
10. Tinosorb® S



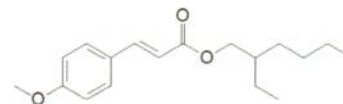
Benzophenone-3



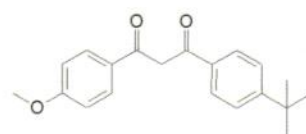
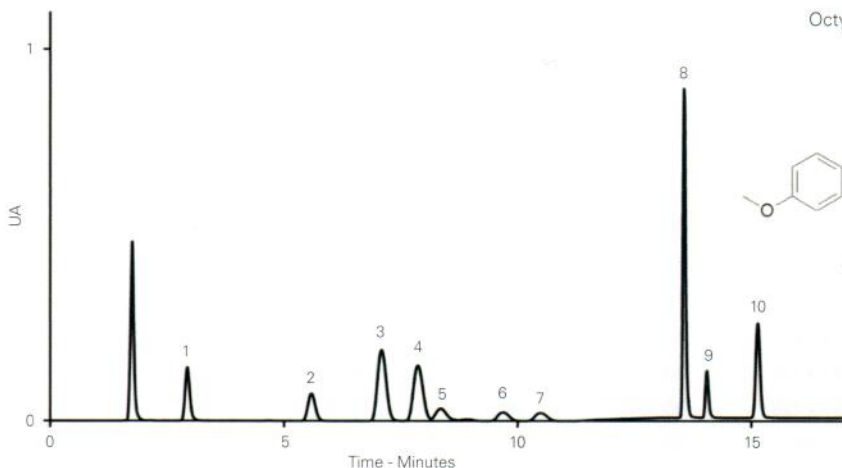
Octocrylene



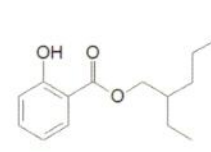
Octyl dimethyl PABA



Octyl methoxycinnamate

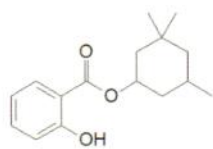


Avobenzone

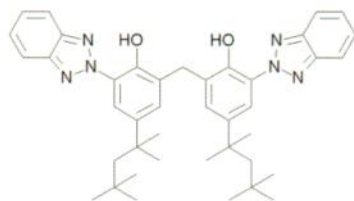


Ethylhexyl salicylate

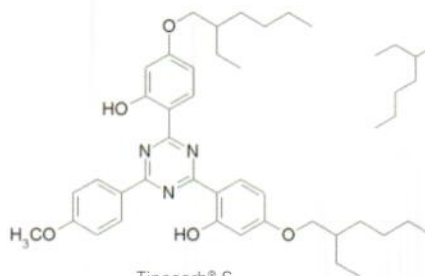
Reproduced with permission of Department of Analytical Chemistry, Institute of Chemistry, University of Campinas, Brazil



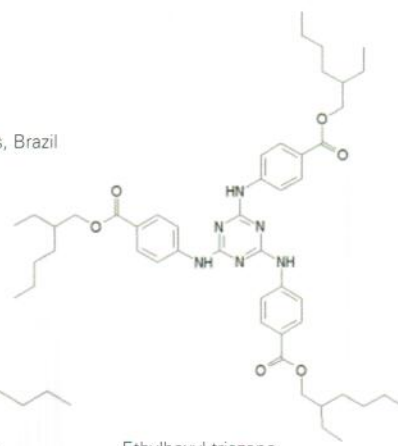
Homosalate



Tinosorb® M



Tinosorb® S



Ethylhexyl triazone

Available from



LCC Engineering & Trading GmbH

Steinbruchstrasse 4, CH-4622 Egerkingen, Switzerland

Tel.: +41 62 398 5271, Fax.: +41 62 398 5274

info@chemsupply.ch

www.chromatographyshop.com