

Conditions

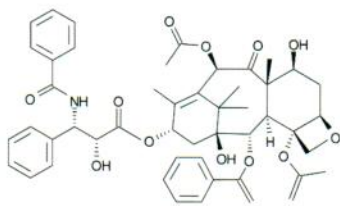
Column: ACE UltraCore 2.5 SuperC18
Dimensions: 150 x 2.1 mm
Part Number: CORE-25A-1502U
Mobile Phase: A: 0.5% formic acid in H₂O
 B: 0.5% formic acid in MeCN

Gradient:

Time (mins)	%B
0.0	10
1.0	10
3.0	40
22.0	60
25.0	95

Flow Rate: 0.35 mL/min

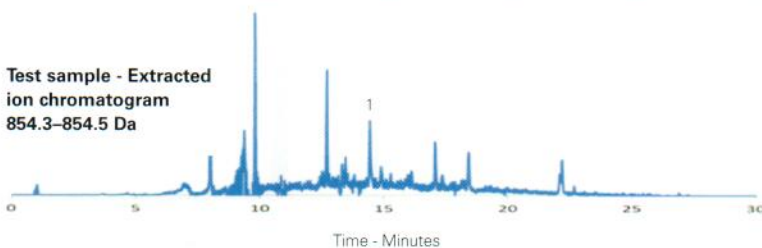
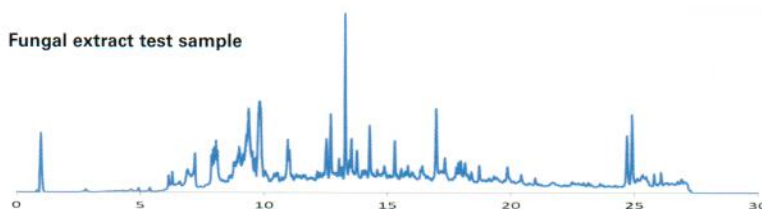
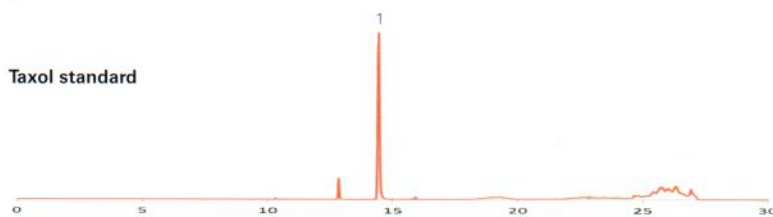
Detection: Orbitrap Elite MS
 FT positive ion mode
 Collision induced dissociation isolation width 5 Da
 Normalised collision energy 32 eV
 Activation Q 0.25
 Activation times 10 ms



Taxol (Paclitaxel)

Analyte

1. Taxol (Paclitaxel)



Reproduced with permission of University of Bristol, UK

Telithromycin Analysis

Application #AN3280

Conditions

Column: ACE 5 C18
Dimensions: 250 x 4.6 mm
Part Number: ACE-121-2546
Mobile Phase: 0.05 M phosphate buffer pH
 4.0/MeOH (45:55 v/v)

Flow Rate: 1 mL/min

Injection: 20 µL

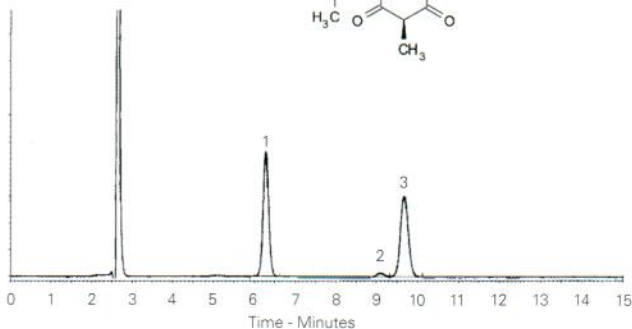
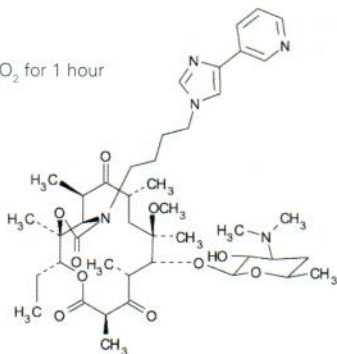
Temperature: 50 °C

Detection: UV, 265 nm

Sample: Exposed to 3% H₂O₂ for 1 hour

Analytes

1. Telithromycin
 2. Degradant 1
 3. Degradant 2



Reproduced with permission of Brazilian Pharmacopoeia

ACE columns are available in
 an extensive range of phases,
 particle sizes and dimensions

Available from



LCC Engineering & Trading GmbH

Steinbruchstrasse 4, CH-4622 Egerkingen, Switzerland

Tel.: +41 62 398 5271, Fax.: +41 62 398 5274

info@chemsupply.ch

www.chromatographyshop.com