

Tocopherols

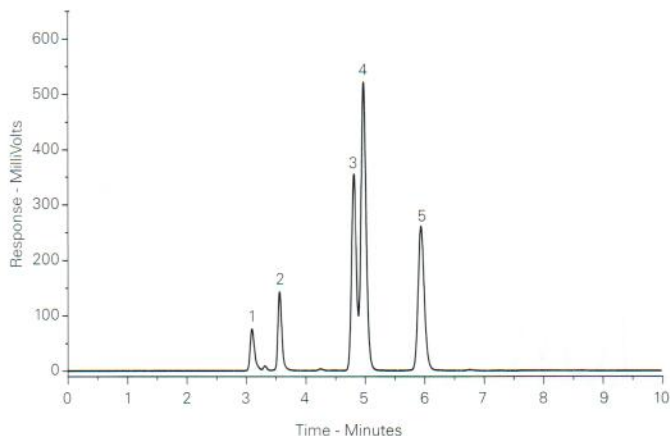
Application #AN2790

Conditions

Column: ACE 5 SIL
Dimensions: 250 x 4.6 mm
Part Number: ACE-127-2546
Mobile Phase: Hexane/IPA (98:2 v/v)
Flow Rate: 1 mL/min
Injection: 1 µL
Temperature: Ambient
Detection: UV-Vis, 450 nm

Analytes

1. γ-Tocopherol
2. α-Tocopherol
3. β-Tocopherol
4. β-Tocopherol
5. δ-Tocopherol



Toxins from *Amanita Phalloides* Mushrooms by LC-HRMS

Application #AN4060

Conditions

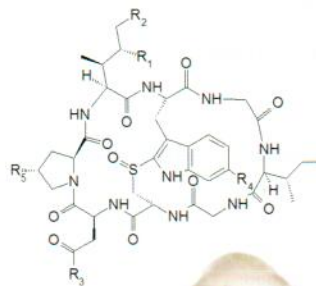
Column: ACE 3 AQ
Dimensions: 150 x 3.0 mm
Part Number: ACE-116-1503
Mobile Phase: A: 0.1% formic acid in H₂O
 B: 0.1% formic acid in MeOH
Gradient:

Time (mins)	%B
0	15
17	100
22	100
22	15
30	15

Flow Rate: 0.4 mL/min
Injection: 10 µL
Temperature: 50 °C
Detection: Thermo Exactive MS
 ESI in positive ion mode

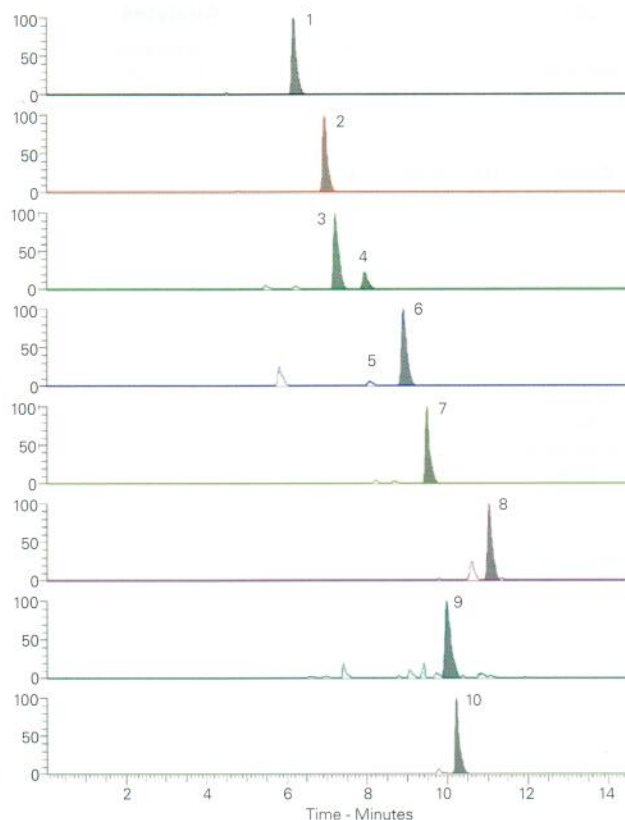
Analyte

1. Amanitoxins



Amanita Phalloides

Peak	Analyte	R1	R2	R3	R4	R5	Exact Mass
1	α - Amanitin	OH	OH	NH ₂	OH	OH	918.35417
2	β - Amanitin	OH	OH	OH	OH	OH	919.338182
3	γ - Amanitin	H	OH	NH ₂	OH	OH	902.359252
4	Amaninamide	OH	OH	NH ₂	H	OH	902.359252
5	Amanin	OH	OH	OH	H	OH	903.343267
6	ε - Amanitin	H	OH	OH	OH	OH	903.343267
7	Amanullin	H	H	NH ₂	OH	OH	886.364337
8	Proamanullin	H	H	NH ₂	OH	H	870.369423
9	Amanullinic Acid	H	H	OH	OH	OH	887.348353
10	Bacitracin (IS)	-	-	-	-	-	1421.7489



Reproduced with permission of Fera Science Ltd, York, UK

Tricyclic Antidepressants

Application #AN3920

Conditions

Column: ACE 5 C18
Dimensions: 250 x 4.6 mm
Part Number: ACE-121-2546
Mobile Phase: MeOH/25 mM KH₂PO₄ pH 6.0 in H₂O (80:20 v/v)
Flow Rate: 1 mL/min
Temperature: 22 °C
Detection: UV, 215 nm

Analytes

1. Norephedrine
2. Nortriptyline
3. Toluene
4. Imipramine
5. Amitriptyline

Available from



LCC Engineering & Trading GmbH

Steinbruchstrasse 4, CH-4622 Egerkingen, Switzerland

Tel.: +41 62 398 5271, Fax.: +41 62 398 5274

info@chemsupply.ch

www.chromatographyshop.com

