

Conditions

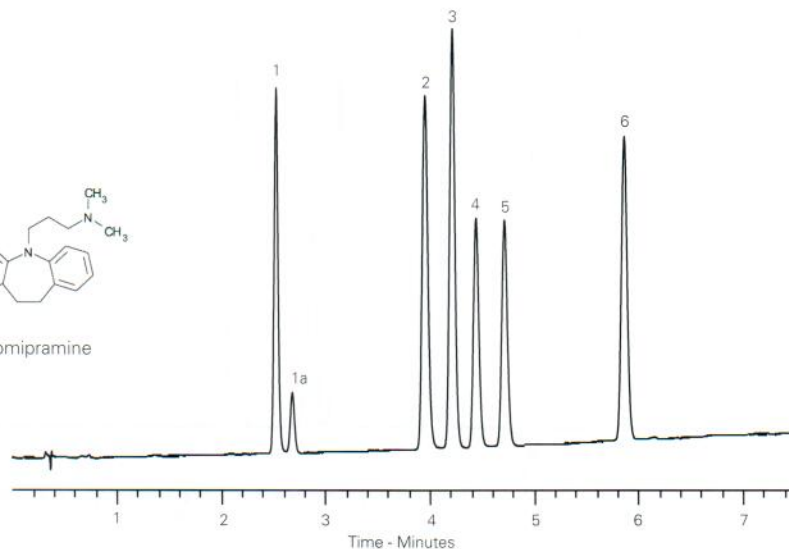
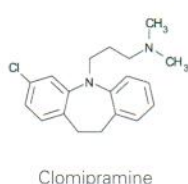
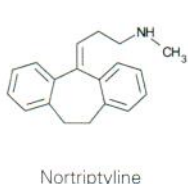
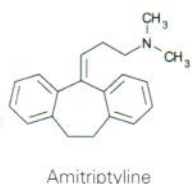
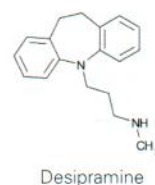
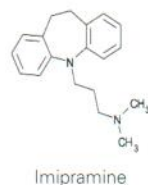
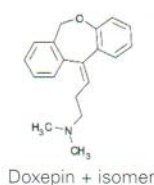
Column: ACE Excel 2 SuperC18
Dimensions: 100 x 3.0 mm
Part Number: EXL-1011-1003U
Mobile Phase: A: 20 mM ammonium formate pH 3.0 in H₂O
 B: 20 mM ammonium formate pH 3.0 in MeOH/H₂O (9:1 v/v)
Gradient:

Time (mins)	%B
0.0	50
6.0	70
7.0	70
7.5	50

Flow Rate: 1.2 mL/min
Injection: 2 µL
Temperature: 40 °C
Detection: UV, 260 nm

Analytes

1. Doxepin + isomer
2. Imipramine
3. Desipramine
4. Amitriptyline
5. Nortriptyline
6. Clomipramine



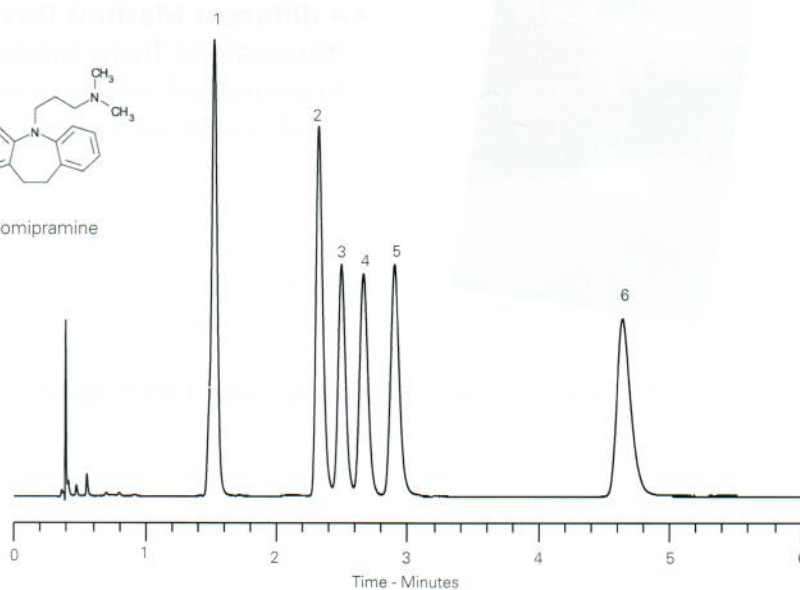
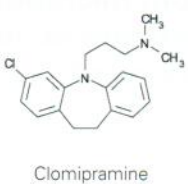
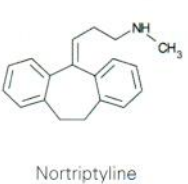
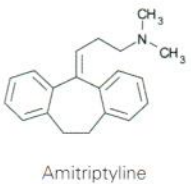
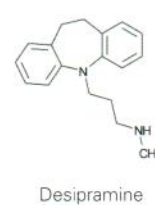
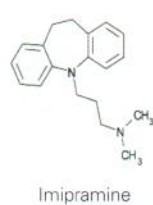
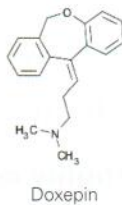
Tricyclic Antidepressants (Isocratic)

Conditions

Column: ACE Excel 2 C18-PFP
Dimensions: 100 x 3.0 mm
Part Number: EXL-1010-1003U
Mobile Phase: 20 mM ammonium formate pH 3.0 in MeOH/H₂O (54:46 v/v)
Flow Rate: 1.2 mL/min
Injection: 2 µL
Temperature: 40 °C
Detection: UV, 260 nm

Analytes

1. Doxepin
2. Imipramine
3. Desipramine
4. Amitriptyline
5. Nortriptyline
6. Clomipramine



Available from



LCC Engineering & Trading GmbH
 Steinbruchstrasse 4, CH-4622 Egerkingen, Switzerland
 Tel.: +41 62 398 5271, Fax.: +41 62 398 5274
info@chemsupply.ch
www.chromatographyshop.com