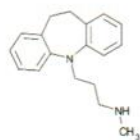


**Conditions**

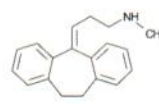
**Column:** ACE 5 C18  
**Dimensions:** 250 x 4.6 mm  
**Part Number:** ACE-121-2546  
**Mobile Phase:** 20 mM ammonium acetate pH 6.3  
 MeCN/H<sub>2</sub>O (65:35 v/v)  
**Flow Rate:** 1.5 mL/min  
**Injection:** 10 µL  
**Temperature:** 60 °C  
**Detection:** UV, 215 nm

**Analytes**

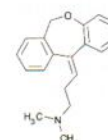
1. Desipramine
2. Nortriptyline
3. Doxepin
4. Imipramine
5. Amitriptyline



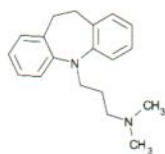
Desipramine



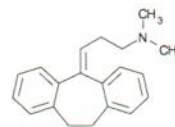
Nortriptyline



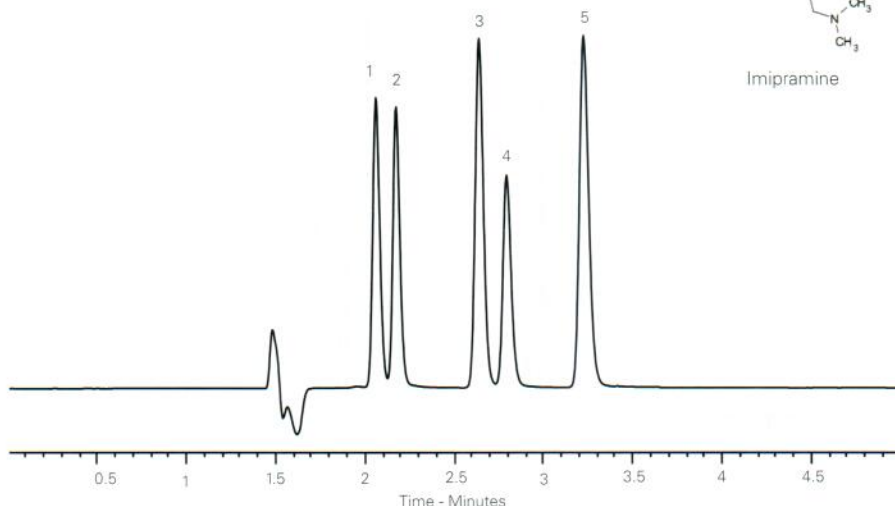
Doxepin



Imipramine



Amitriptyline



Available from



**LCC Engineering & Trading GmbH**  
 Steinbruchstrasse 4, CH-4622 Egerkingen, Switzerland  
 Tel.: +41 62 398 5271, Fax: +41 62 398 5274  
 info@chemsupply.ch  
 www.chromatographyshop.com

## ACE Method Development Kits

### Intelligent Solutions for Method Development



- **Highly cost effective** - 2 and 3 column kits available for the same price as a single column
- **4 different Method Development Kits** available in dimensions from microbore (0.5 mm id) through to analytical (4.6 mm id) for rapid, systematic method development.
- Carefully selected ACE phases enabling the power of selectivity to be fully exploited
- Each ACE phase provides different selectivity due to differing interactions

**FREE Application Support and FREE Method Development Service**  
 Learn more: [www.ace-hplc.com](http://www.ace-hplc.com) or email: [info@ace-hplc.com](mailto:info@ace-hplc.com)