

Conditions

Column: ACE Excel 1.7 SuperC18
Dimensions: 100 x 3.0 mm; 2 x 100 x 3.0 mm (coupled); 3 x 100 x 3.0 mm (coupled)
Part Number: EXL-1711-1003U
Mobile Phase: A: H₂O
 B: MeCN
 C: 200 mM ammonium formate pH 3.0

Analytes

- | | | |
|------------------|---------------------------|---------------------------------|
| 1. 2-Aminophenol | 7. 4-Hydroxybenzoic acid | 13. 4-Nitrophenol |
| 2. Hydroquinone | 8. Caffeine | 14. 4-Chloroacetanilide |
| 3. Theobromine | 9. 2-Acetamidophenol | 15. 2-Nitrophenol |
| 4. Paracetamol | 10. 2-Hydroxybenzoic acid | 16. Acetylsalicylsalicylic acid |
| 5. Paraxanthine | 11. Phenol | 17. Salsalate |
| 6. Theophylline | 12. Aspirin | |

Gradient:

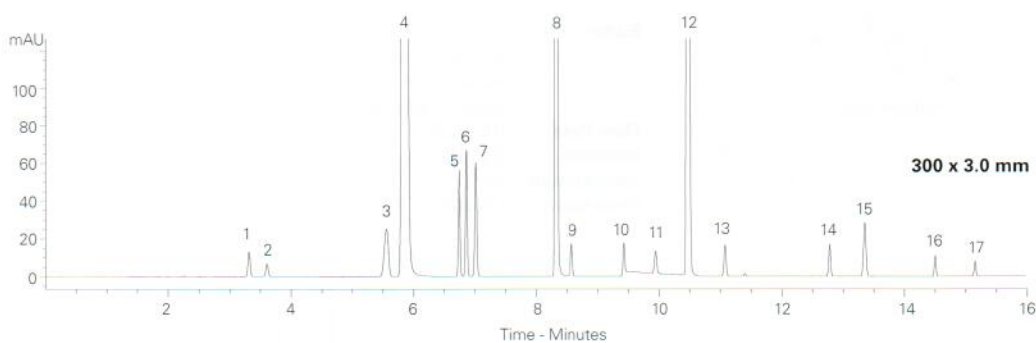
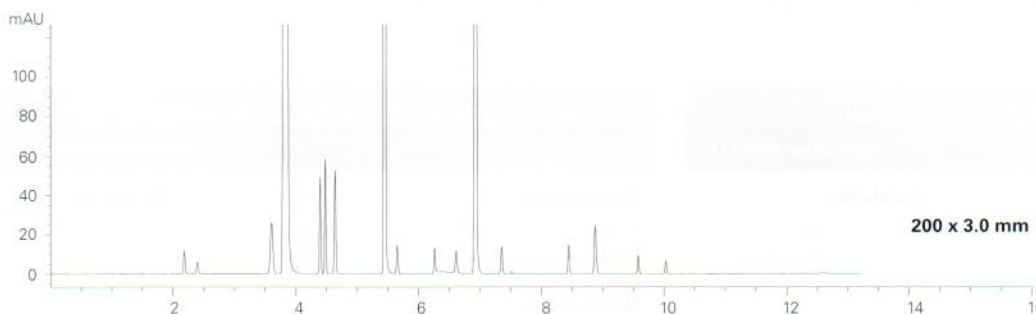
Time (mins)	Time (mins)			%A	%B	%C
	100 x 3.0 mm	200 x 3.0 mm	300 x 3.0 mm			
-	0.00	0.00	0.00	90	5	5
0.00	1.21	2.41	2.41	90	5	5
5.00	11.21	17.41	17.41	20	75	5
6.00	12.21	18.41	18.41	20	75	5
6.50	13.21	19.41	19.41	90	5	5

Flow Rate: 0.8 mL/min

Temperature: 80 °C

Detection: UV, 270 nm

Dimensions	Resolution, R _s 5,6	Peak Capacity, P _e
100 x 3.0 mm	1.63	154
200 x 3.0 mm	2.10	228
300 x 3.0 mm	2.31	271



Available from



LCC Engineering & Trading GmbH

Steinbruchstrasse 4, CH-4622 Egerkingen, Switzerland

Tel.: +41 62 398 5271, Fax.: +41 62 398 5274

info@chemsupply.ch

www.chromatographyshop.com