

**Conditions**

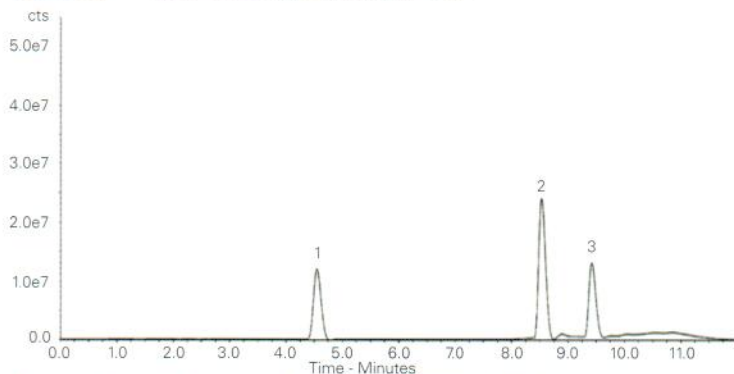
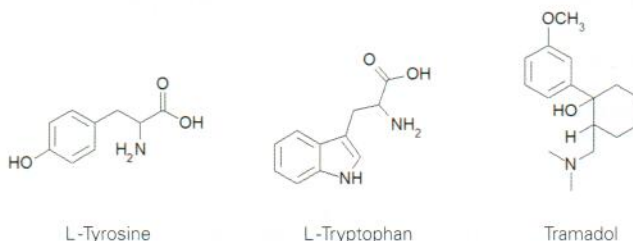
**Column:** ACE 5 C18  
**Dimensions:** 150 x 4.6 mm  
**Part Number:** ACE-121-1546  
**Mobile Phase:** A: 50 mM NaH<sub>2</sub>PO<sub>4</sub> in H<sub>2</sub>O  
 B: MeCN/H<sub>2</sub>O (60:40 v/v)  
**Gradient:**

Time (mins)	%B
0.0	0
5.0	10
8.0	100
9.0	100
9.5	0
14.0	0

**Flow Rate:** 1 mL/min  
**Injection:** 5 µL  
**Temperature:** 25 °C  
**Detection:** Fluorescence, λ<sub>Ex</sub> 280 nm, λ<sub>Em</sub> 340 nm

**Analytes**

1. L-Tyrosine
2. L-Tryptophan
3. Tramadol



Reproduced with permission of Centre for the Research and Technology in Agro-Environmental and Biological Sciences, University of Trás-os-Montes and Alto Douro (UTAD-CITAB), Portugal

Available from



**LCC Engineering & Trading GmbH**

Steinbruchstrasse 4, CH-4622 Egerkingen, Switzerland  
 Tel.: +41 62 398 5271, Fax.: +41 62 398 5274  
[info@chemsupply.ch](mailto:info@chemsupply.ch)  
[www.chromatographyshop.com](http://www.chromatographyshop.com)

**USP Monograph – 17α-Ethinylestradiol**

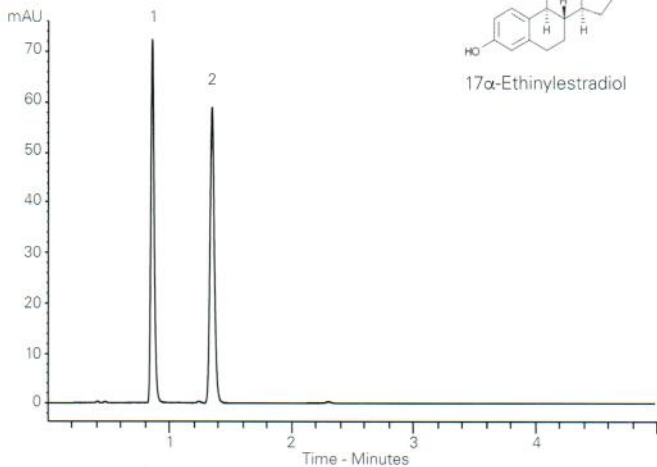
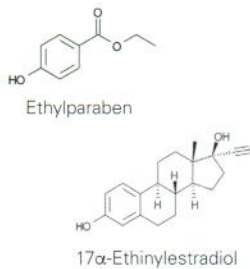
Application #AN1710

**Conditions**

**Column:** ACE UltraCore 2.5 SuperC18  
**Dimensions:** 50 x 3.0 mm  
**Part Number:** CORE-25A-0503U  
**Mobile Phase:** H<sub>2</sub>O/MeCN (50:50 v/v)  
**Flow Rate:** 0.43 mL/min  
**Injection:** 3.1 µL  
**Temperature:** Ambient (22 °C)  
**Detection:** UV, 280 nm

**Analytes**

1. Ethylparaben
2. 17α-Ethinylestradiol



Translated method according to USP <621> guidance. Always check the latest and official method information from the relevant pharmacopoeia prior to analysis.

**USP Monograph – Amlodipine Besylate**

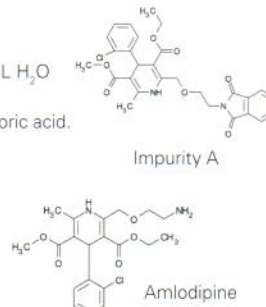
Application #AN2550

**Conditions**

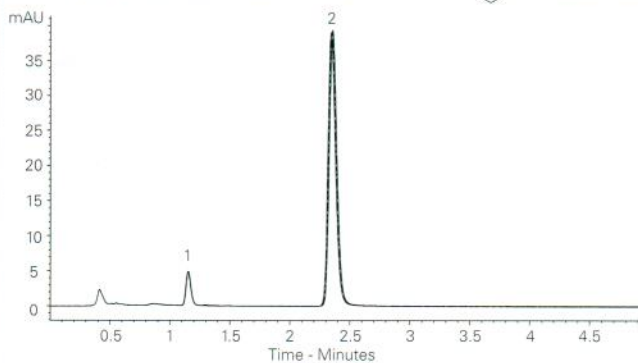
**Column:** ACE UltraCore 2.5 SuperC18  
**Dimensions:** 75 x 3.0 mm  
**Part Number:** CORE-25A-7503U  
**Mobile Phase:** MeOH/MeCN/buffer pH 3.0 (35:15:50 v/v/v)  
**Buffer:** 7.0 mL triethylamine in 900 mL H<sub>2</sub>O to 1000 mL volumetric flask. Adjust to pH 3.0 with phosphoric acid. Dilute to volume with H<sub>2</sub>O  
**Flow Rate:** 0.8 mL/min  
**Injection:** 5 µL  
**Temperature:** 25 °C  
**Detection:** UV, 237 nm

**Analytes**

1. Impurity A
2. Amlodipine



Chromatogram shows 6 injections overlaid



Translated method according to USP <621> guidance. Always check the latest and official method information from the relevant pharmacopoeia prior to analysis.