

USP Monograph – Budesonide

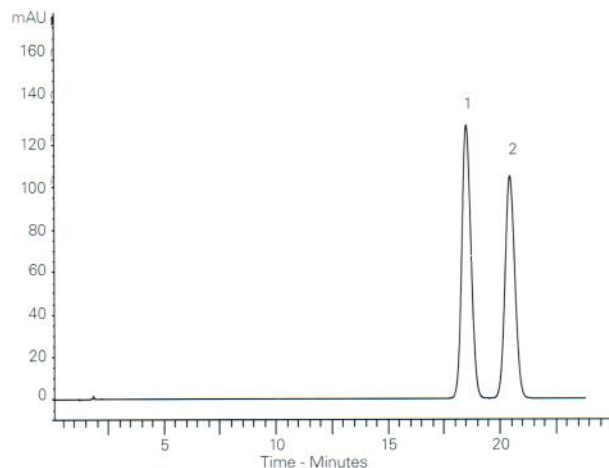
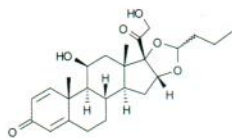
Application #AN1720

Conditions

Column: ACE 5 C18
Dimensions: 150 x 4.6 mm
Part Number: ACE-121-1546
Mobile Phase: 18 mM monobasic sodium phosphate pH 3.2 in H₂O/MeCN (68:32 v/v)
Flow Rate: 1.5 mL/min
Injection: 20 µL
Temperature: Ambient (22 °C)
Detection: UV, 254 nm

Analytes

1. Budesonide B
2. Budesonide A



Translated method according to USP <621> guidance. Always check the latest and official method information from the relevant pharmacopoeia prior to analysis.

USP Monograph – Doxepin

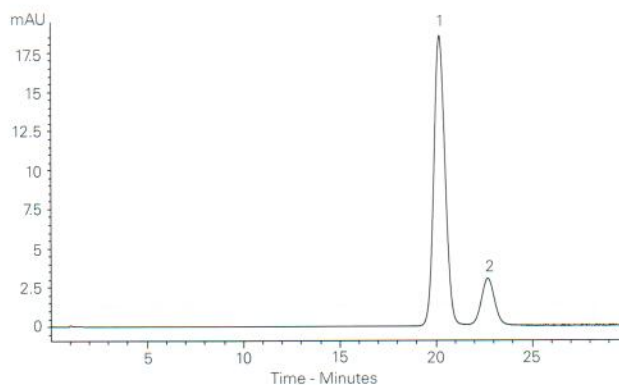
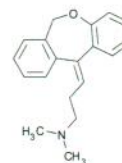
Application #AN1730

Conditions

Column: ACE 3 C8
Dimensions: 50 x 4.6 mm
Part Number: ACE-112-0546
Mobile Phase: 0.2 M monobasic NaH₂PO₄ pH 2.5 in H₂O/MeOH (30:70 v/v)
Flow Rate: 0.56 mL/min
Injection: 4.5 µL
Temperature: 50 °C
Detection: UV, 254 nm

Analytes

1. Doxepin isomer
2. Doxepin isomer



Translated method according to USP <621> guidance. Always check the latest and official method information from the relevant pharmacopoeia prior to analysis.

USP Monograph – Estradiol

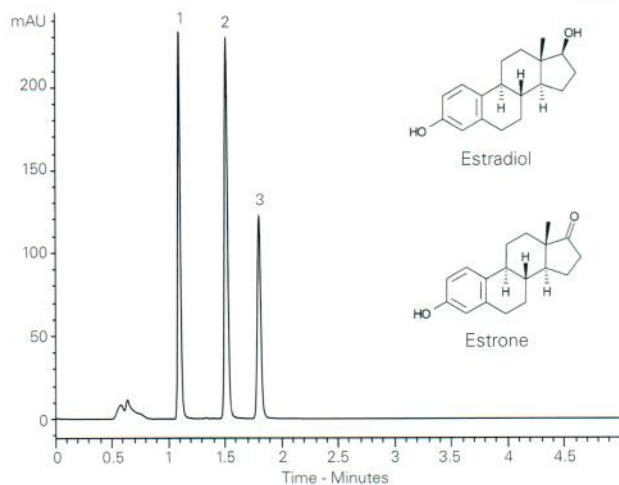
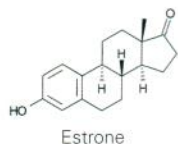
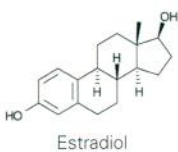
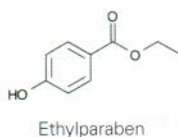
Application #AN1740

Conditions

Column: ACE UltraCore 2.5 SuperC18
Dimensions: 100 x 4.6 mm
Part Number: CORE-25A-1046U
Mobile Phase: H₂O/MeCN (45:55 v/v)
Flow Rate: 1.39 mL/min
Injection: 10.1 µL
Temperature: Ambient (22 °C)
Detection: UV, 205 nm

Analytes

1. Ethylparaben
2. Estradiol
3. Estrone



Translated method according to USP <621> guidance. Always check the latest and official method information from the relevant pharmacopoeia prior to analysis.

USP Monograph – Glimepiride

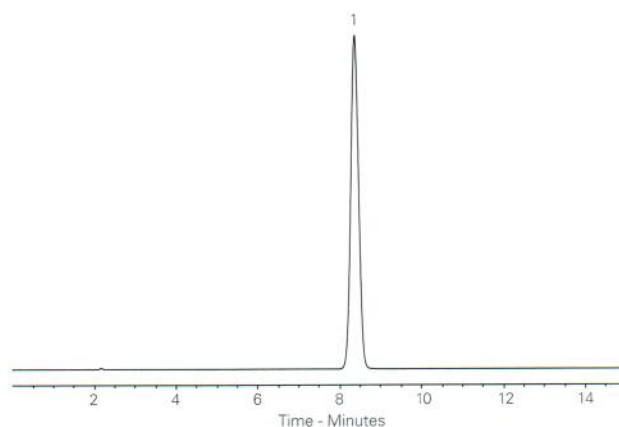
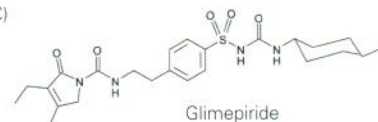
Application #AN1760

Conditions

Column: ACE 5 C18
Dimensions: 150 x 4.6 mm
Part Number: ACE-121-1546
Mobile Phase: 8 mM monobasic sodium phosphate pH 2.4/MeCN (1:1 v/v)
Flow Rate: 1.32 mL/min
Injection: 16 µL
Temperature: Ambient (22 °C)
Detection: UV, 228 nm

Analyte

1. Glimepiride



Translated method according to USP <621> guidance. Always check the latest and official method information from the relevant pharmacopoeia prior to analysis.