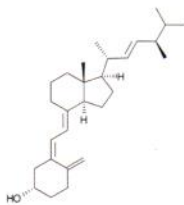


**Conditions**

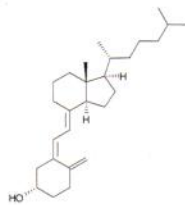
**Column:** ACE Excel 2 C18-Amide  
**Dimensions:** 50 x 3.0 mm  
**Part Number:** EXL-1012-0503U  
**Mobile Phase:** 100% MeCN  
**Flow Rate:** 0.43 mL/min  
**Injection:** 2 µL  
**Temperature:** 20 °C  
**Detection:** UV, 265 nm

**Analytes**

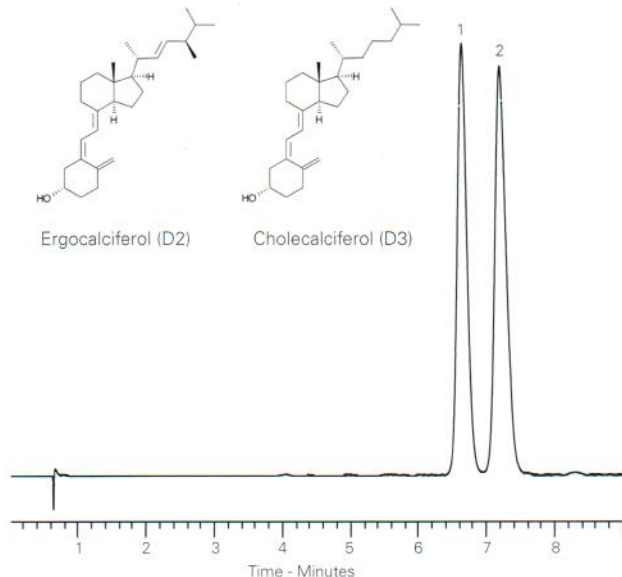
1. Ergocalciferol (D2)
2. Cholecalciferol (D3)



Ergocalciferol (D2)



Cholecalciferol (D3)



ACE columns are available in an extensive range of phases, particle sizes and dimensions

Available from



**LCC Engineering & Trading GmbH**

Steinbruchstrasse 4, CH-4622 Egerkingen, Switzerland

Tel.: +41 62 398 5271, Fax.: +41 62 398 5274

[info@chemsupply.ch](mailto:info@chemsupply.ch)

[www.chromatographyshop.com](http://www.chromatographyshop.com)

25-Hydroxy Vitamin D in Serum by LC-MS/MS

**Conditions**

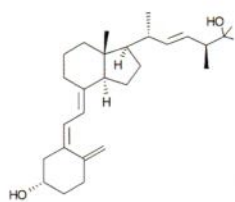
**Column:** ACE Excel 2 C18-PFP  
**Dimensions:** 100 x 2.1 mm  
**Part Number:** EXL-1010-1002U  
**Mobile Phase:** A: 2 mM ammonium acetate, 0.1% formic acid in H<sub>2</sub>O  
 B: 0.1% formic acid in MeOH  
**Gradient:**

Time (mins)	%B
0.0	75
3.0	100
4.0	100

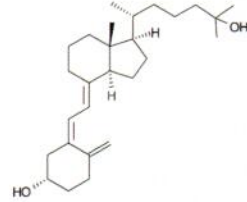
**Analytes**

- 1a. 25-Vitamin D2  
(*m/z* 395.5 → 269.5)
- 1b. 25-OH Vitamin D2  
(*m/z* 395.5 → 119.2)
2. d6-25-OH Vitamin D3 (IS)  
(*m/z* 389.6 → 263.5)
- 3a. 25-OH Vitamin D3  
(*m/z* 383.5 → 257.5)
- 3b. 25-OH Vitamin D3  
(*m/z* 383.5 → 107.2)

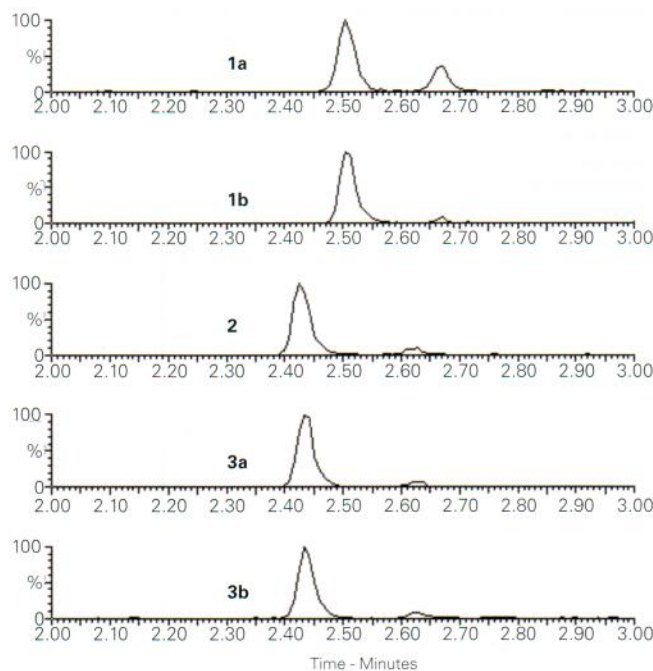
**Flow Rate:** 0.4 mL/min  
**Injection:** 15 µL  
**Temperature:** 40 °C  
**Detection:** Quattro Premier XE triple quad MS  
 MRM positive ESI mode  
 Desolvation temperature: 450 °C  
 Ion source temperature: 150 °C



25-OH Vitamin D2



25-OH Vitamin D3



Reproduced with permission of Biotage GB Ltd